

Switzerland County, Indiana Profile

KDH Community Needs Assessment 2013

Switzerland County Summary

- Switzerland County has a population of 10,424 and has a slow growth rate of 0.5 which mirrors that for Indiana. There is a net migration into the county. By 2020, the population will be 11,950.
- The ethnicity is 98.1% white.
- The unemployment rate is 6.9% in Switzerland County, lower than the Indiana rate of 8.4%.
- The median household income is \$42,285, compared to \$46,438 for Indiana and \$50,502 for the nation. In Switzerland, 28% of the families are below the poverty level, compared to 20.6% of Indiana families, and 20.8% of families in the nation. 29.4% of the children in Switzerland County are below the poverty level.
- In 2010, 22.5% of all adults age 25+ had less than a high school diploma.
- The teen birth rate for Switzerland County in 2009 was 37.8 per 1,000 females age 15-17. This is significantly higher than the rate for Indiana of 20.8 per 1,000.
- The rate of mothers smoking during pregnancy is 27.3% in Switzerland County, compared to 17.1% in Indiana. In Switzerland, there is a 6.8% low birth weight, compared to 8.0% in Indiana.
- Switzerland County has a shortage of health care professionals. All areas of Switzerland County are considered medically underserved. Switzerland County also has a shortage of mental health professionals.
- The rate of chronic bronchitis in Switzerland County and in Indiana is 3.0%. The rate of emphysema in Switzerland is 1.5%, slightly higher than the Indiana rate of 1.4%.
- There are 379 adults with serious mental illness in Switzerland County and 78 seriously emotionally disturbed children.
- The death rate from major cardiovascular disease was 347.0 per 100,000 population for Switzerland County in 2010. This is significantly higher than Indiana's 206.5 and the nation's 193.6 per 100,000 during the same period.
- The incidence of cancer rate (all sites) was higher in Switzerland County - 562 per 100,000 population compared to Indiana's rate of 476 per 100,000. The only type of cancer in which Switzerland County recorded an incidence rate lower than Indiana was Breast Cancer - Switzerland County 82 per 100,000 versus Indiana's 116 per 100,000 population.

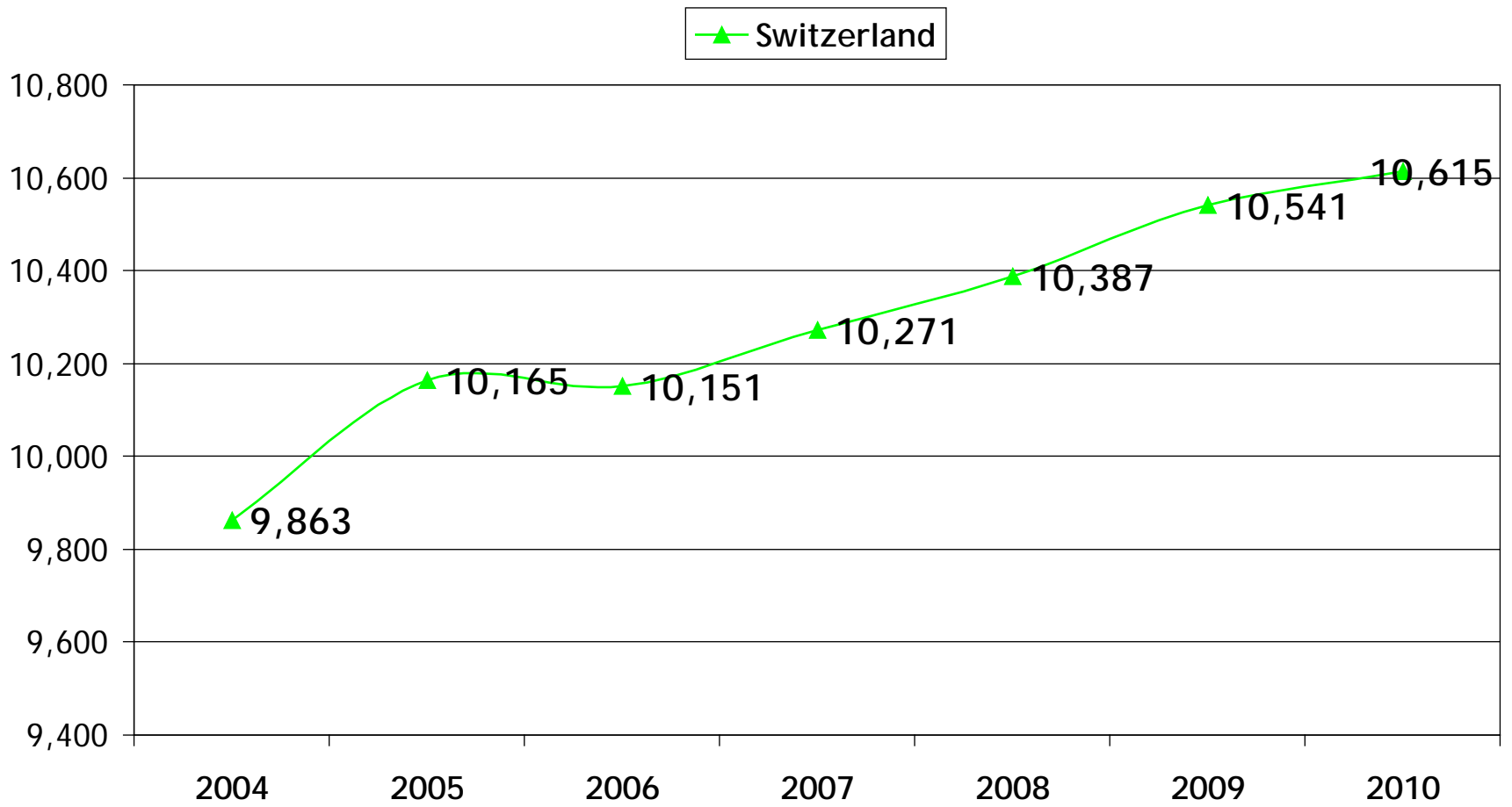
Total Population and Geographic Data

2012 Estimation

Total Population and Geographic Data			
	Switzerland	Indiana	Nation
Total Population	10,424	6,537,334	313,914,040
Persons per sq. mi.	47.3	182.5	88.8
Total Housing Units	4,954	2,800,614	132,312,404
Land Area (sq. miles)	220.63	35,826.11	3,531,905.43
Water Area (sq. miles)	2	594	264,129

Historical Population

Estimated on July 1st each year



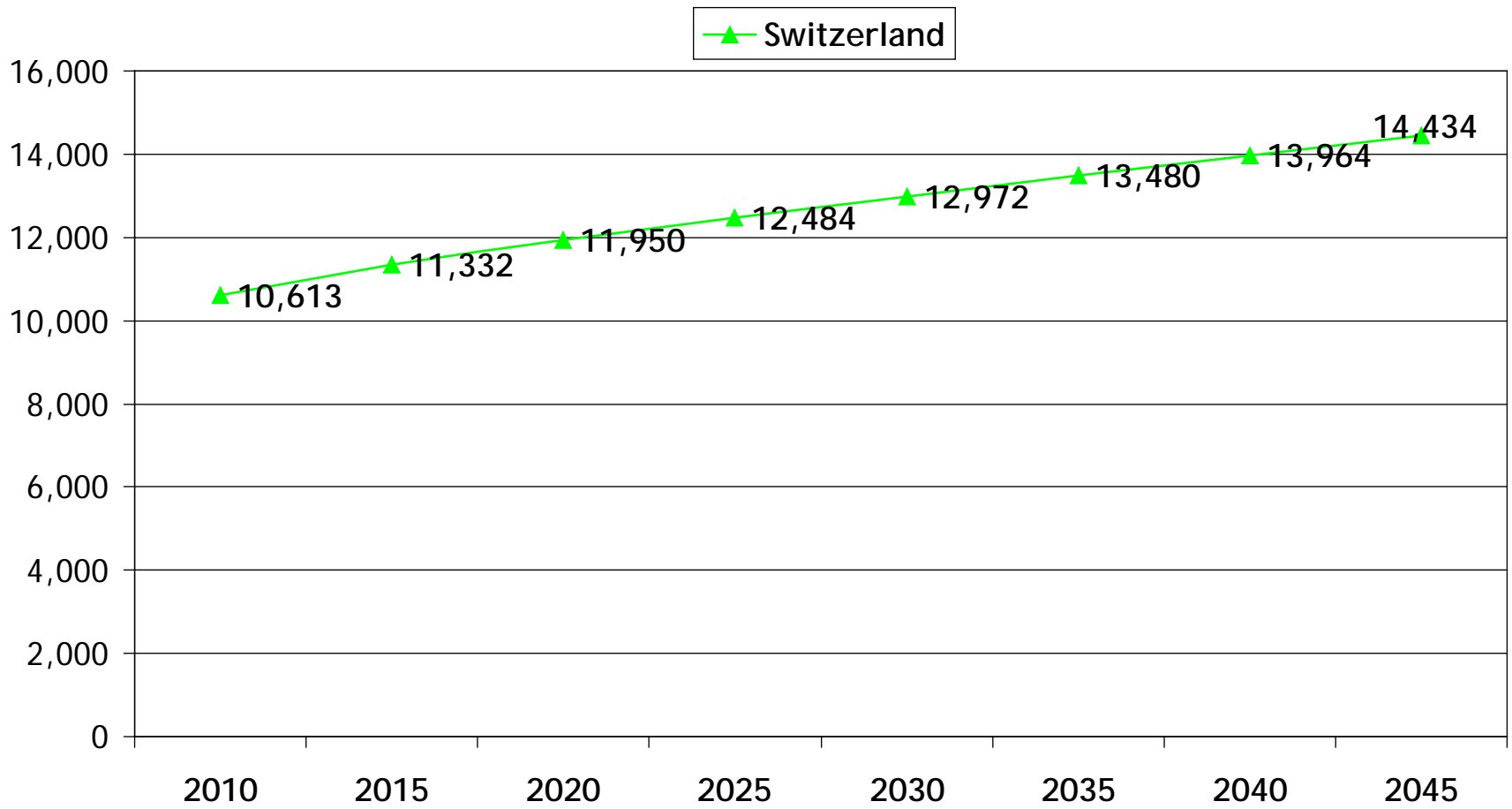
Population Change

2010 to 2011

Location	Total Population Change	Natural Increase		
		Births	Deaths	Natural Increase
Indiana	33,122 or 0.5%	84,700	56,467	28,233
Switzerland	-44 or (0.5)%	139	105	34

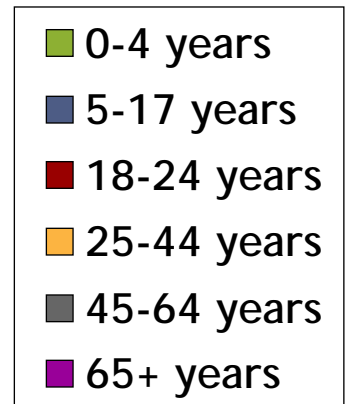
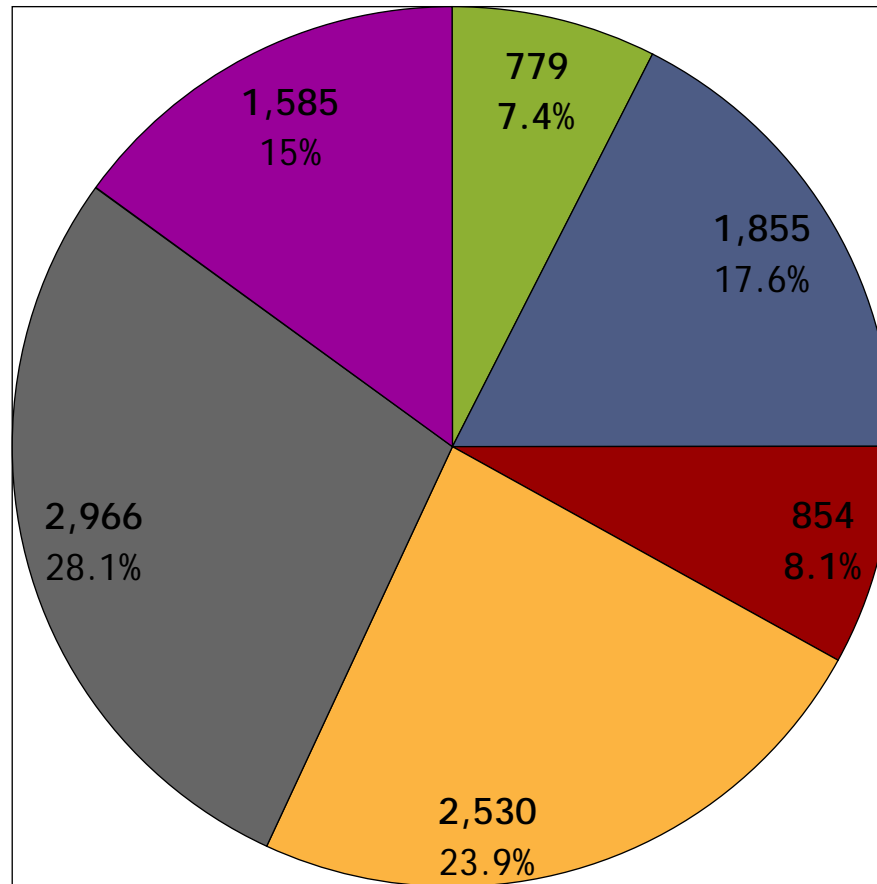
Location	Net Migration		
	Total	Net International	Net Internal
Indiana	2,389	9,194	-6,805
Switzerland	40	1	39

Population Projection



Population Estimates in Age in 2011

Median Age:
39.8 years



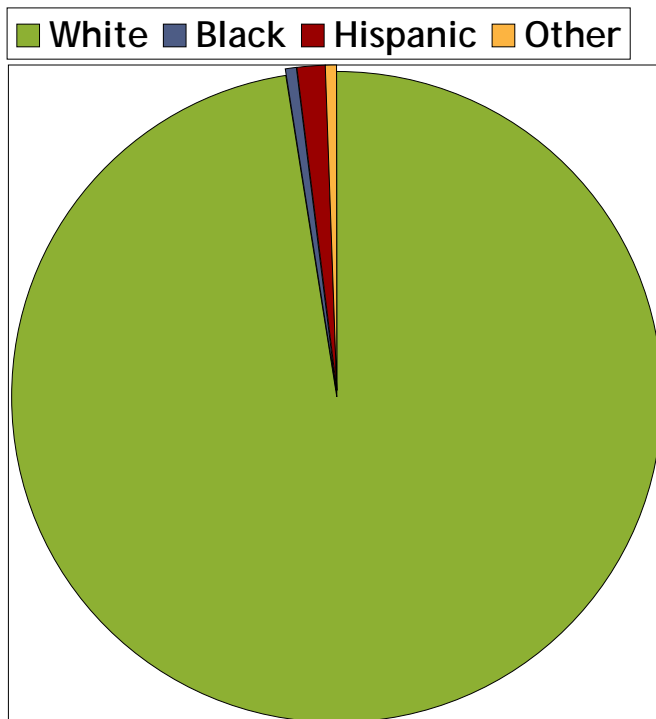
Race / Ethnicity

2012 Estimation

Race / Ethnicity (2012)			
	Switzerland	Indiana	Nation
White	98.1%	86.6%	77.9%
Black	0.6%	9.4%	13.1%
Asian	0.2%	1.8%	5.1%
Two or More Races	0.8%	1.8%	2.4%
Hispanic or Latino	1.4%	6.3%	16.9%

Race

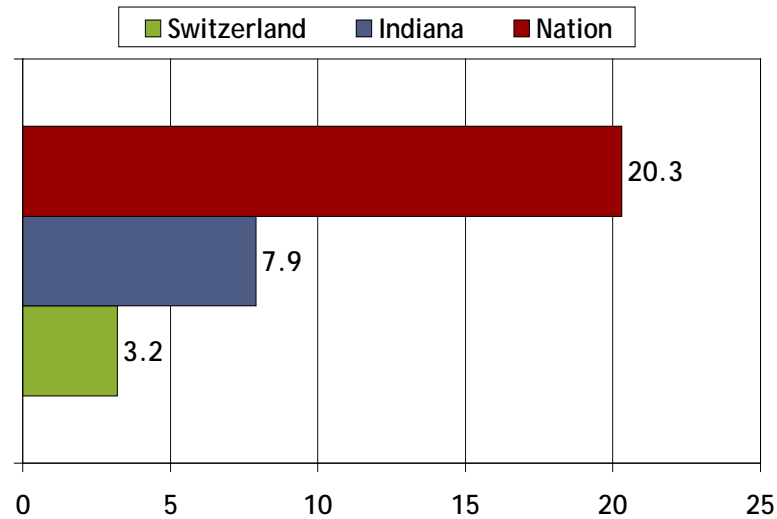
Persons Reporting One Race Only



	Total	% of Total
Total	9,675	100 %
White	10,369	98.1%
Black	58	0.5%
Hispanic	145	1.4%
Other	4	0%

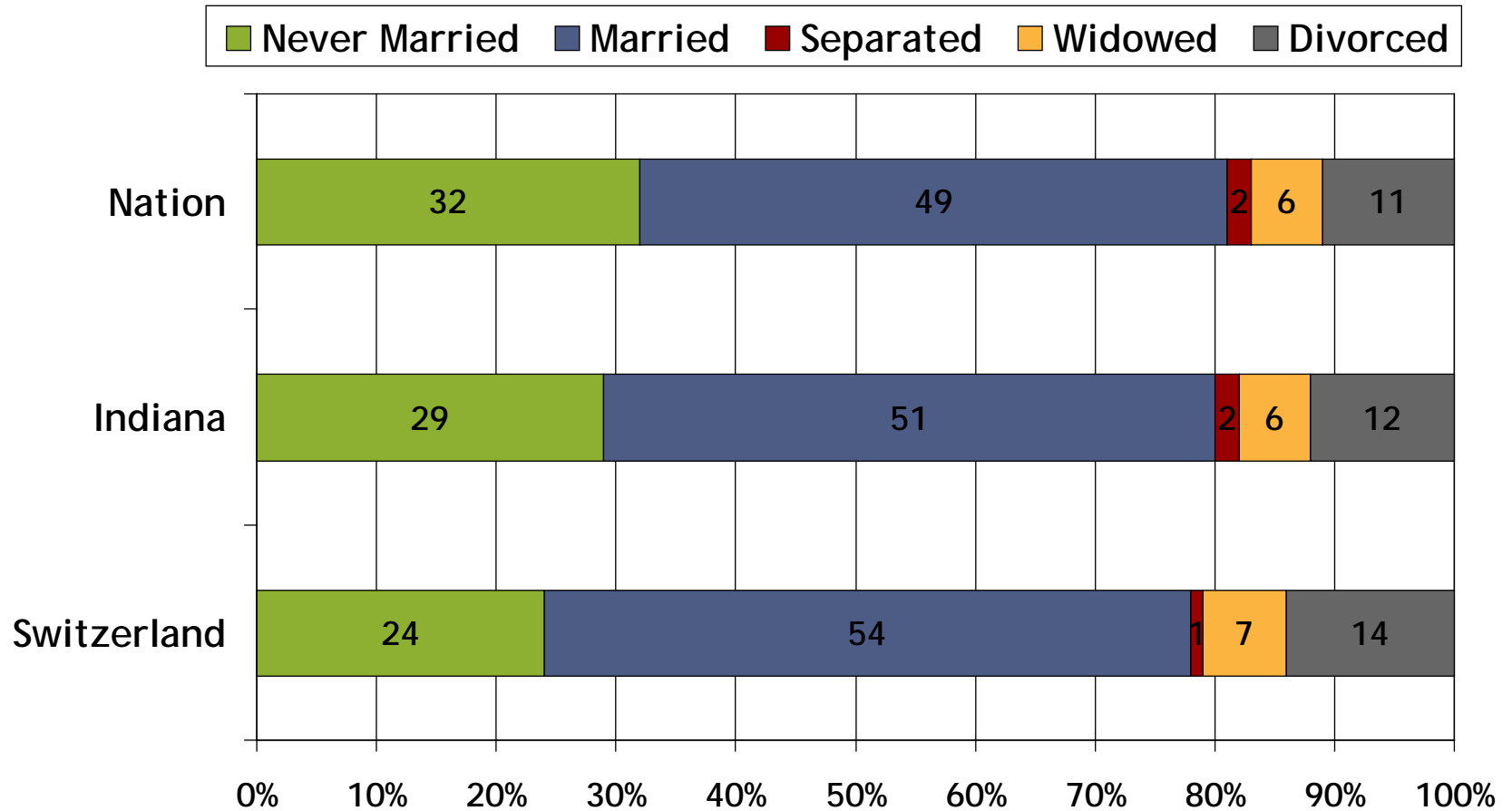
Other includes American Indian, Alaska Native, Native Hawaiian, and other Pacific Islander, in addition to other races.

Language other than English is Spoken in the Household



Total	
Nation	63,253,159
Indiana	514,836
Switzerland	338

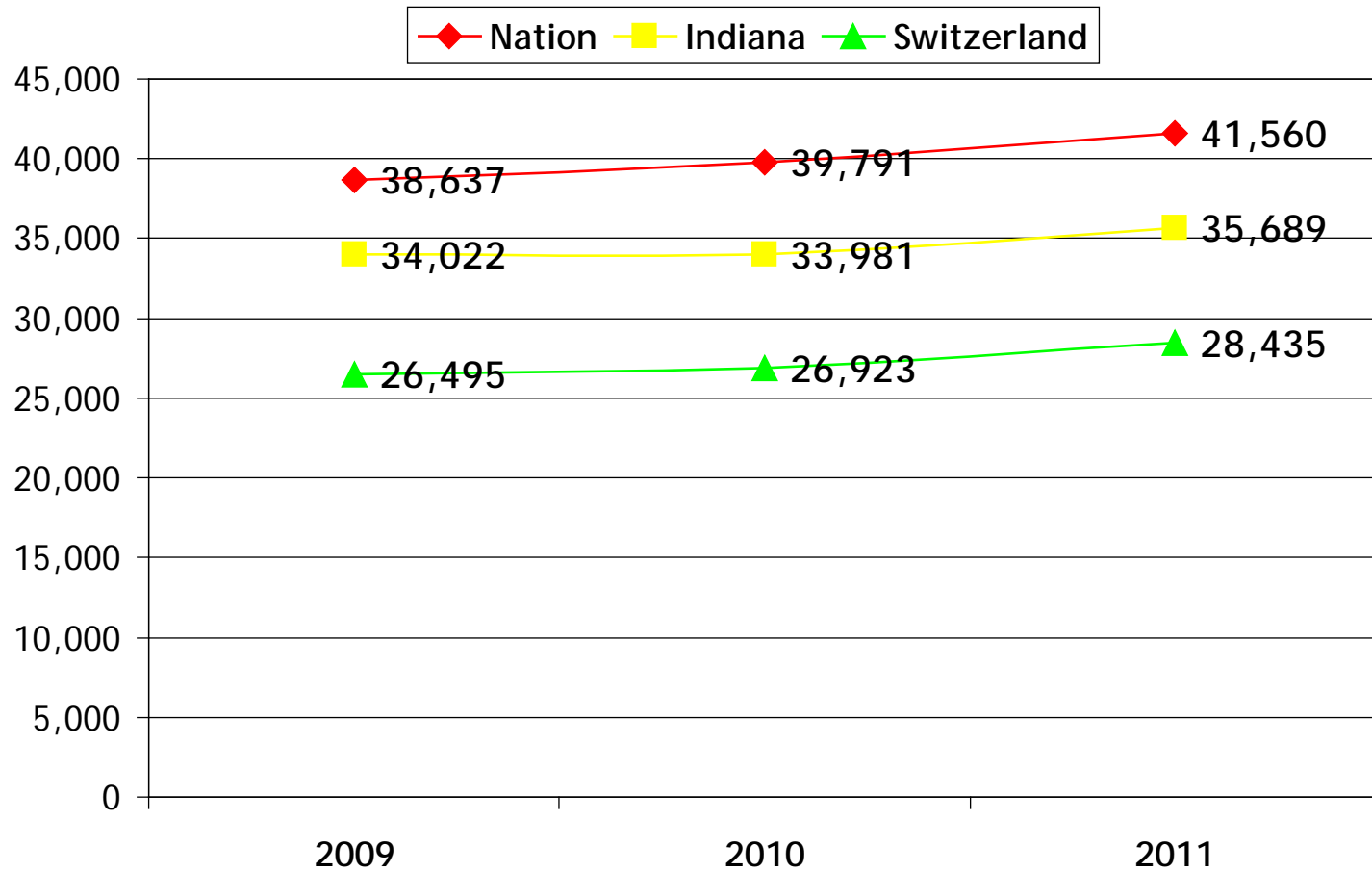
Marital Statistics



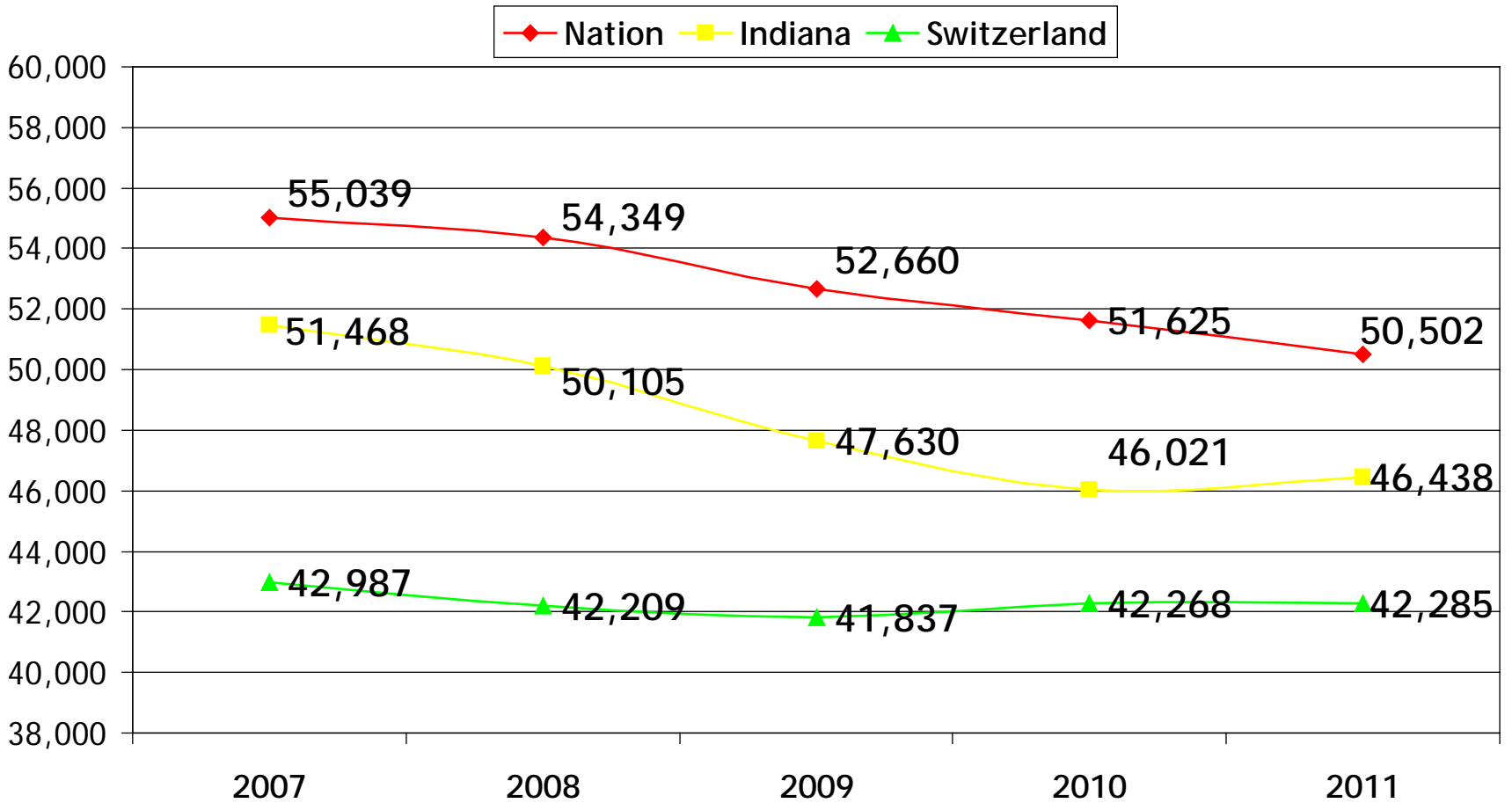
Single Parent Families

	Percentage of Families with a Single Parent	Percentage of Single Fathers in Poverty	Percentage of Single Mothers in Poverty	Percentage of Single Parent Families in Poverty
Nation	32.8	20.7	33.6	30.6
Indiana	32.9	19.0	30.2	27.4
Switzerland	29.8	28.9	29.7	27.0

Per Capita Income

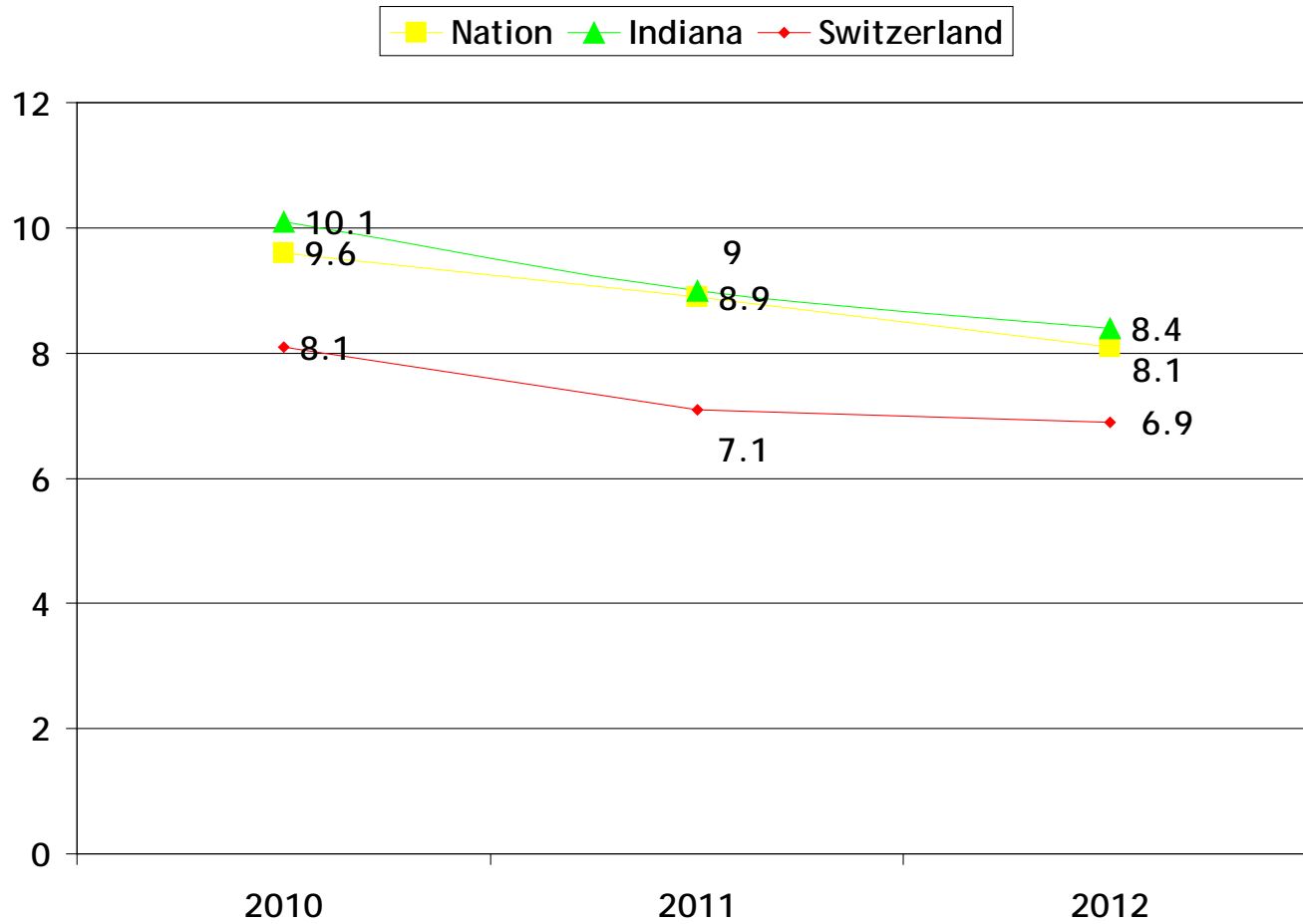


Historical Real Median Household Income



Unemployment Rate

As a percentage



Poverty

Locale	Ages 5 -17 in Families below Poverty	% of Families below Poverty	Individuals below Poverty	% of Individuals below Poverty	% of Children in Poverty, Age 0-18 (2008)	% of Children in Poverty, Age 0-18 (2011)
Nation	10,976,987	20.8	48,452,035	15.9	18.2	22.5
Indiana	233,507	20.6	1,001,053	15.8	17.9	22.6
Switzerland	503	28	1,830	17.6	26.8	29.4

Public School Students Receiving Free or Reduced Price Lunches

As percentage determined by Student's Household Size and Income

Location	School Lunch	2009	2010	2011	2012
Indiana	Free	33.1%	36.6%	39.0%	40.0%
	Reduced Price	8.6%	8.7%	7.7%	8.2%
Switzerland	Free	35.6%	38.0%	39.2%	41.9%
	Reduced Price	9.5%	9.4%	7.9%	10.3%

Child Food Insecurity

USDA's measure of lack of access, at times, to enough food for an active, healthy lifestyle for all household members and limited or uncertain availability of nutritionally adequate foods.

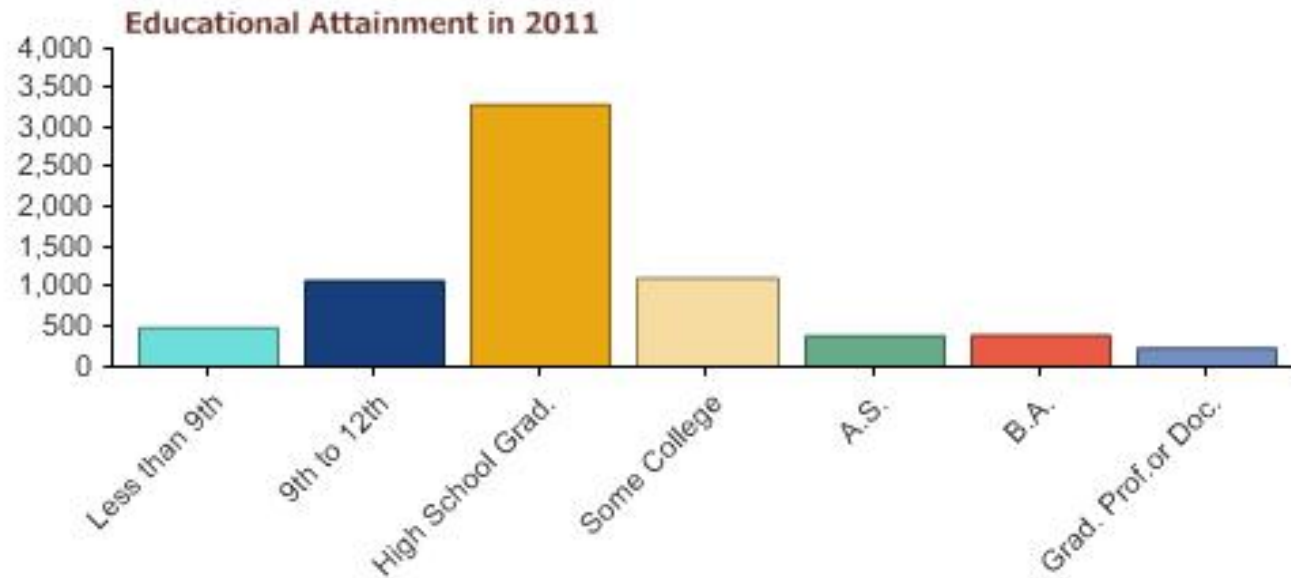
Location	2009	2010
Nation	22%	22%
Indiana	24.5%	22.7%
Switzerland	24.4%	20.8%

Public Assistance

Monthly Average Number of Persons Issued Food Stamps (SNAP)

Location	2009	2010	2011	2012
Indiana	684,280	787,183	867,101	901,880
Switzerland	1,111	1,174	1,394	1,473

Educational Attainment



2007 - 2011	Average Percentage of Adults 25+ with Less than a High School Diploma
Nation	14.6
Indiana	13.4
Switzerland	22.5

Health Insurance

Percent of Adults Age 18+

Location	Have Medical/Hospital/Accident Insurance	No Medical/Hospital/Accident Insurance
Nation	72.7	27.3
Indiana	73.0	27.0
Switzerland	73.2	26.8

Source of Health Insurance

Percent of Adults Age 18+

Location	Place of Employment	Medicare	Medicaid	Through a Union
Nation	43.6	11.5	4.5	3.5
Indiana	44.2	12.0	4.9	3.1
Switzerland	37.6	16.4	8.1	2.2

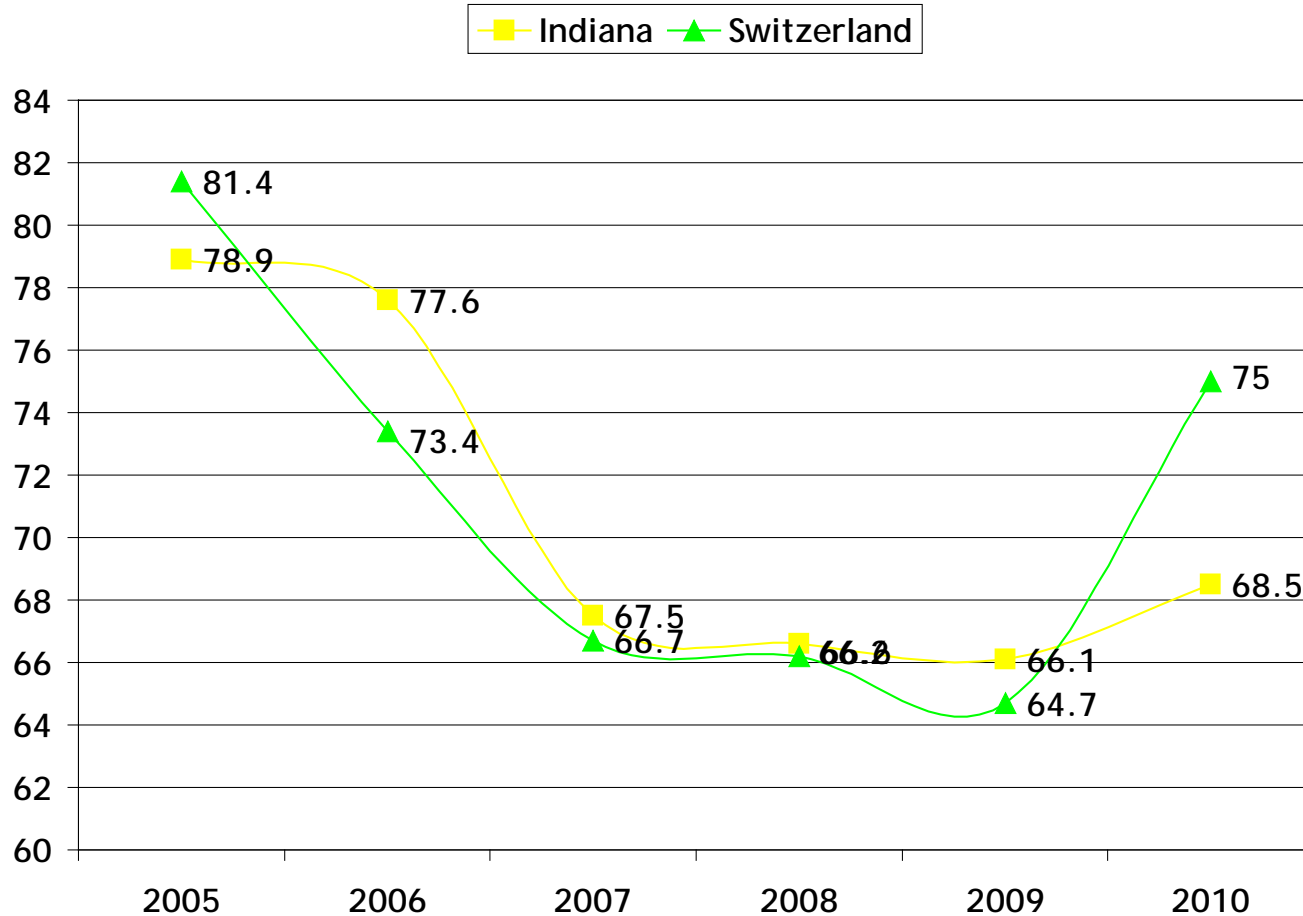
Infant Mortalities

Number of Infant Deaths, Under the Age of 1

	2007	2008	2009	2010
Indiana	677	616	675	630
Switzerland	2	0	3	2

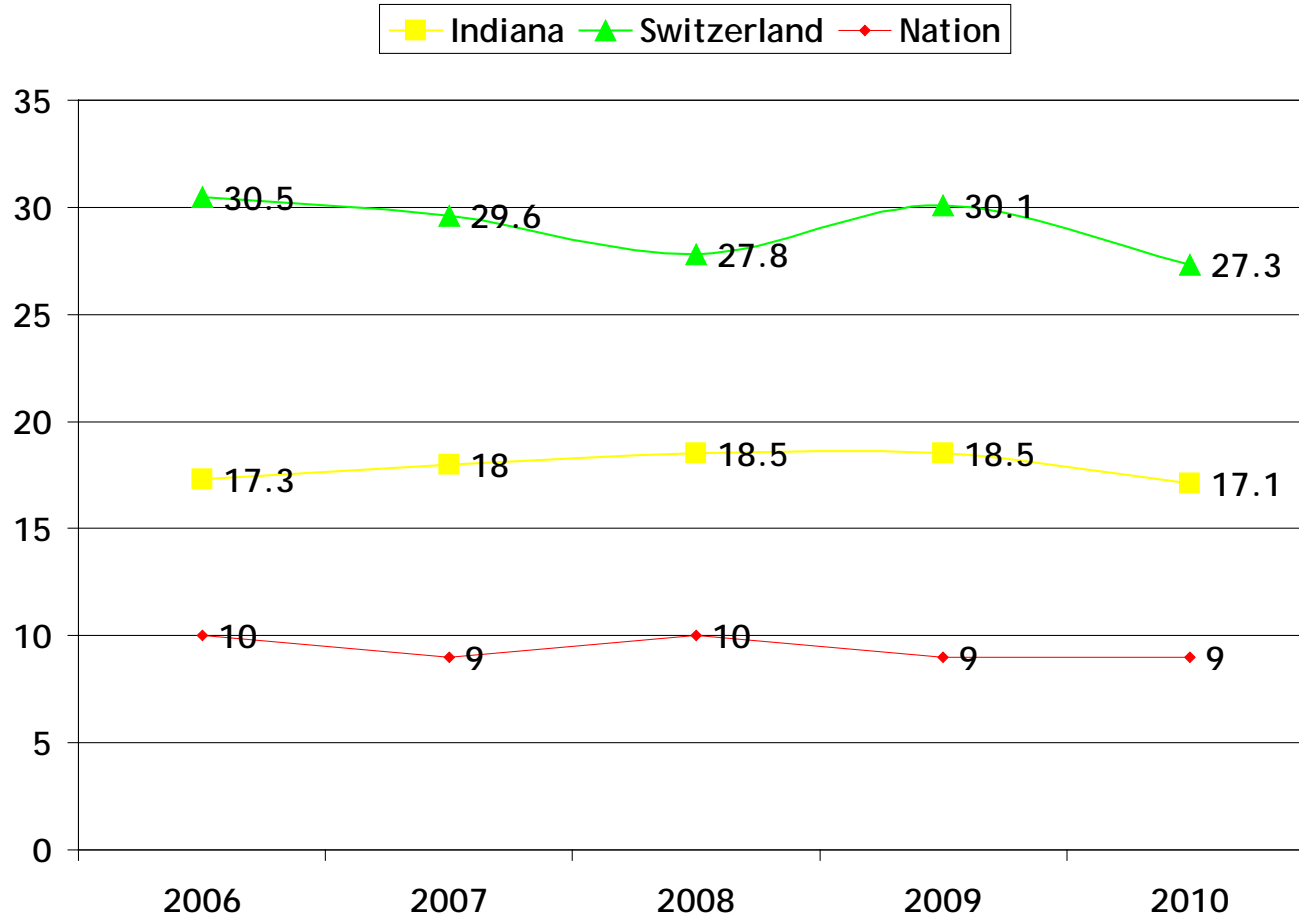
Prenatal Care in 1st Trimester

As a percentage



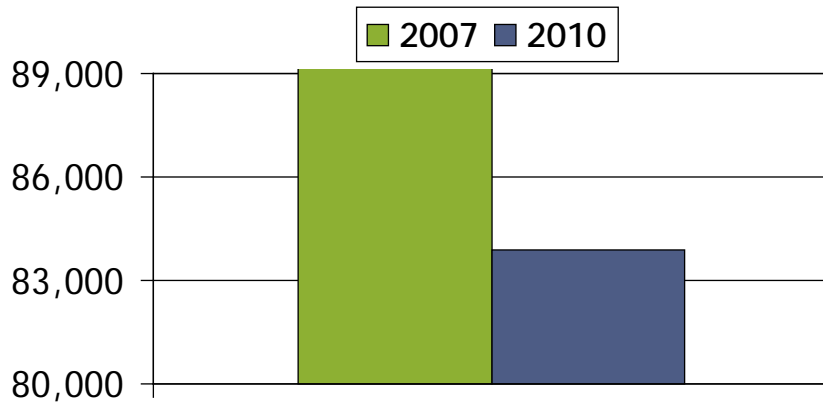
Smoking during Pregnancy

As a percentage



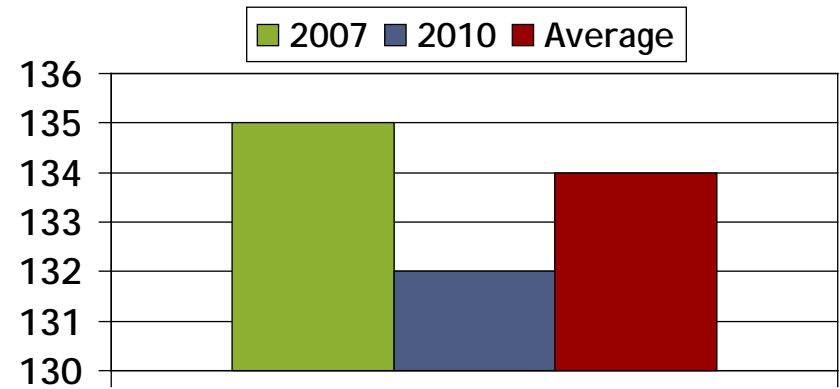
Live Births

Indiana



2007	2010
89,719	83,867

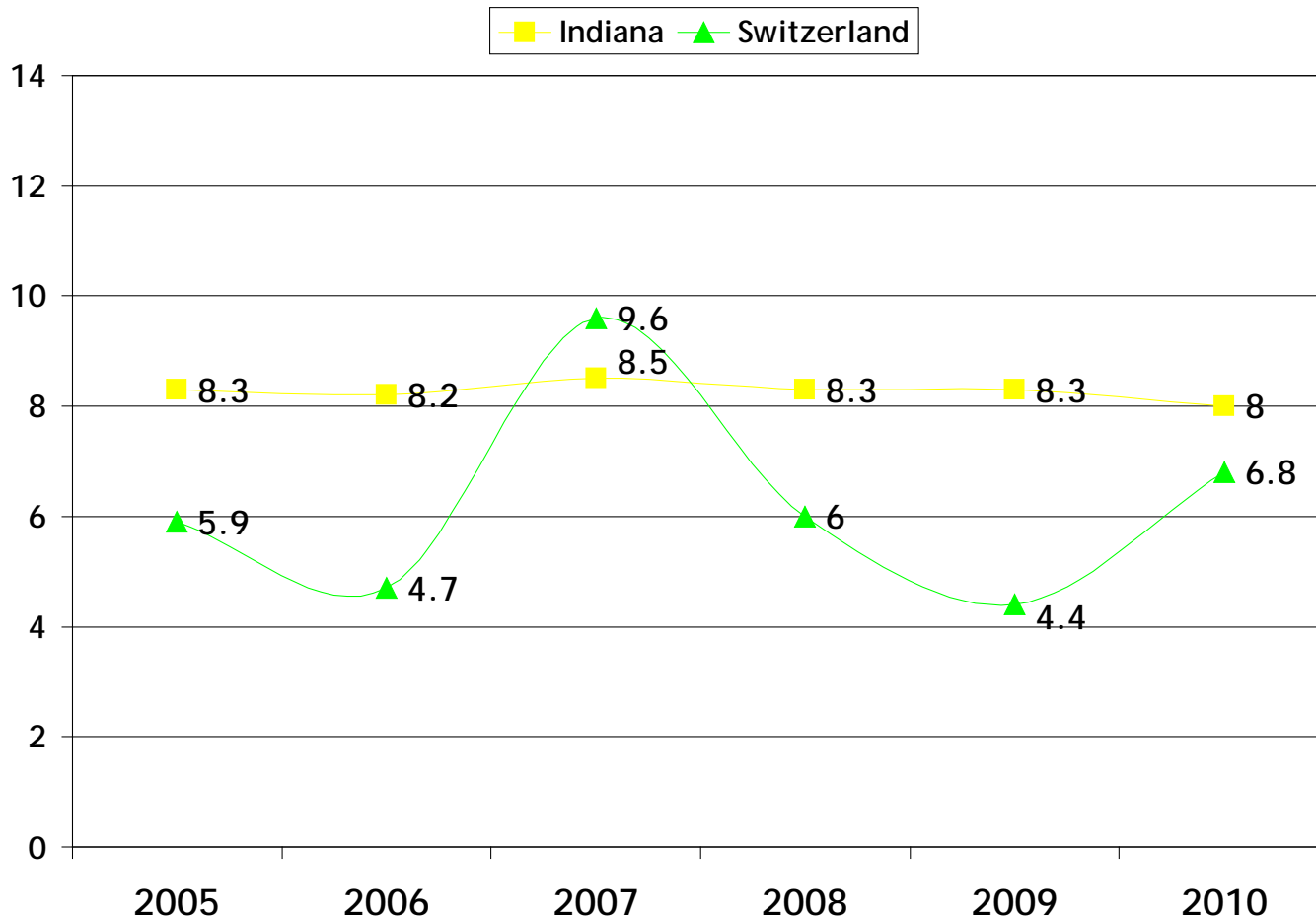
Switzerland County



2007	2010	Avg. 2007-2010
135	132	134

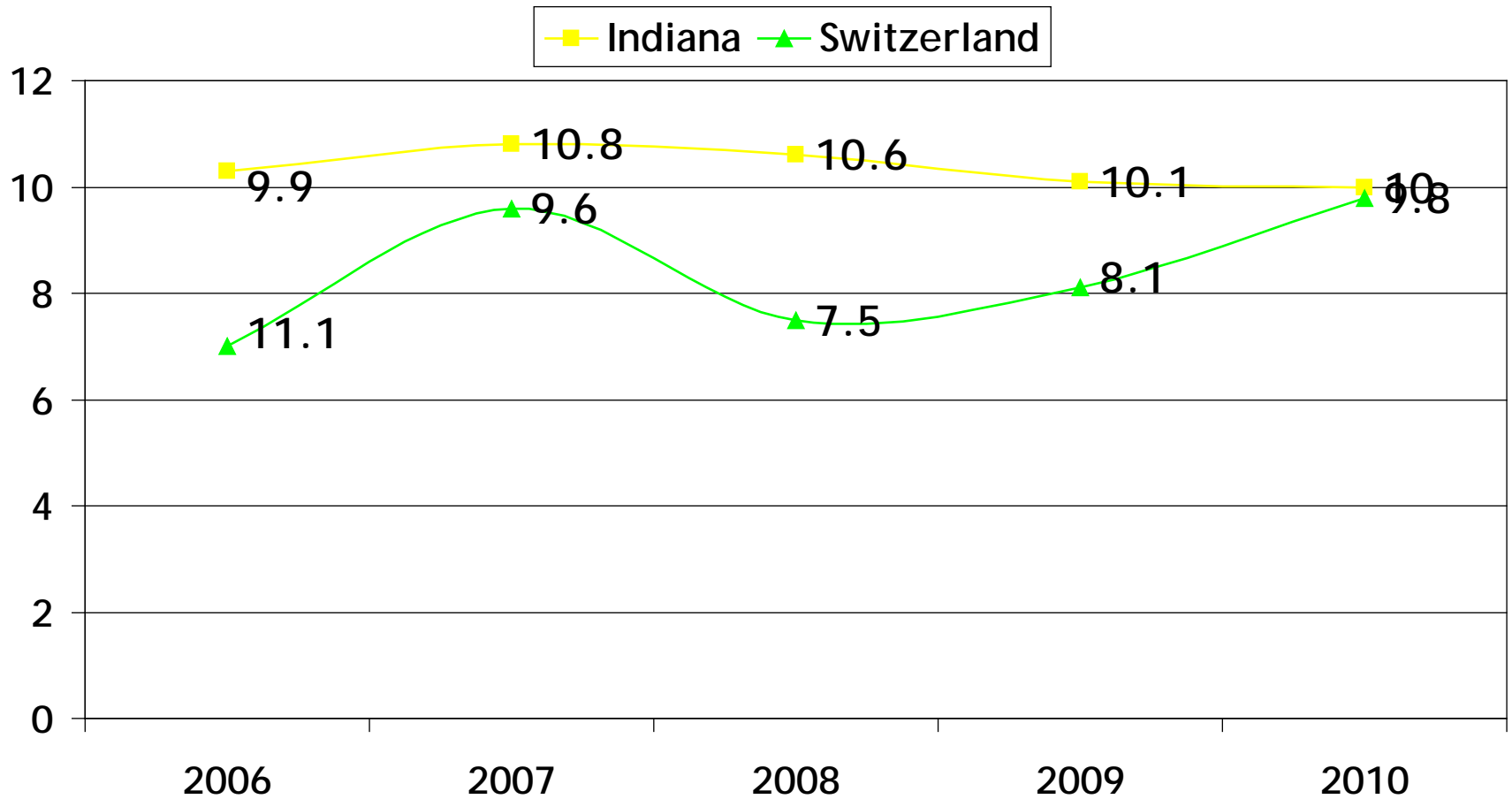
Low Birth Weight

As a percentage

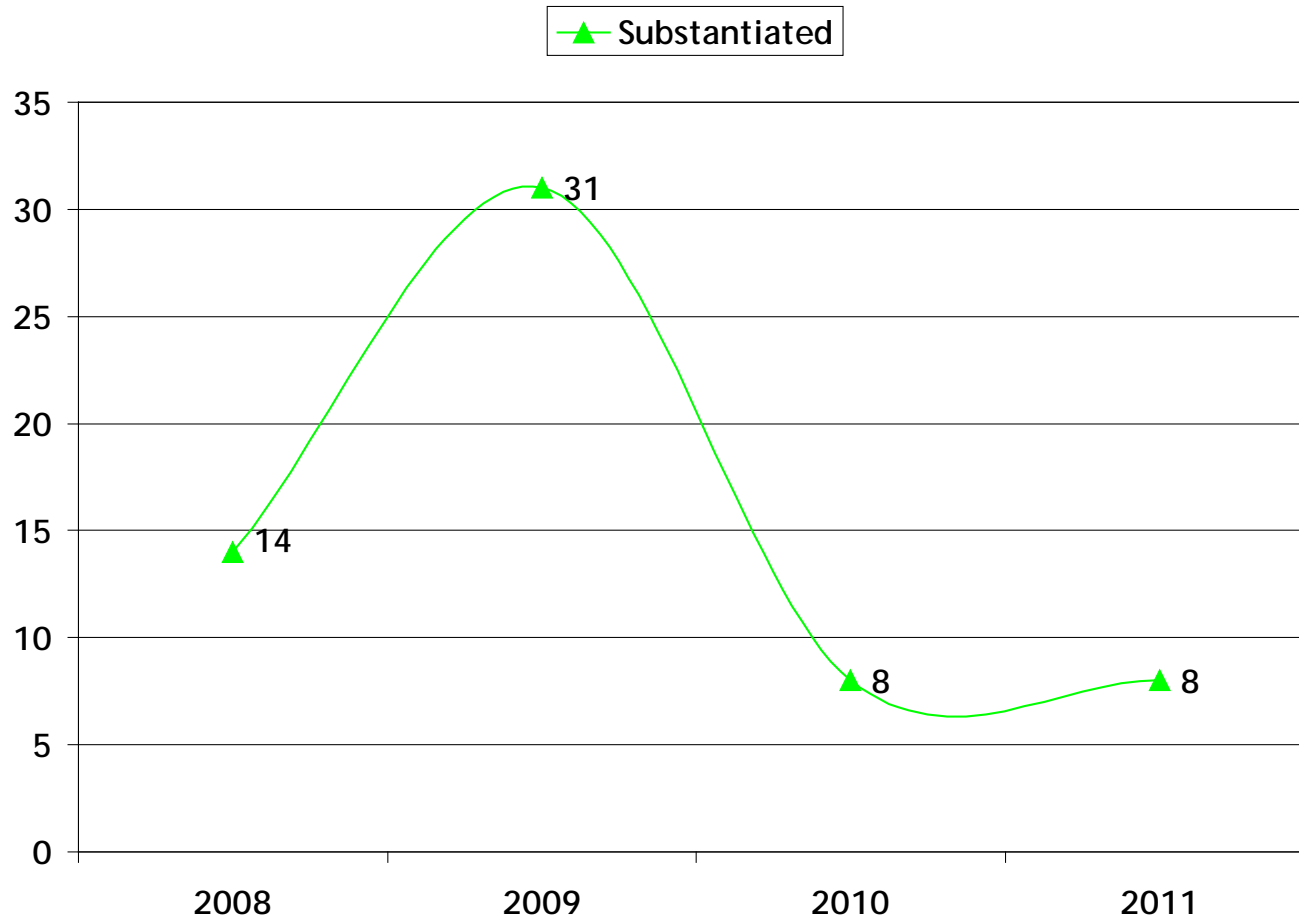


Preterm Births

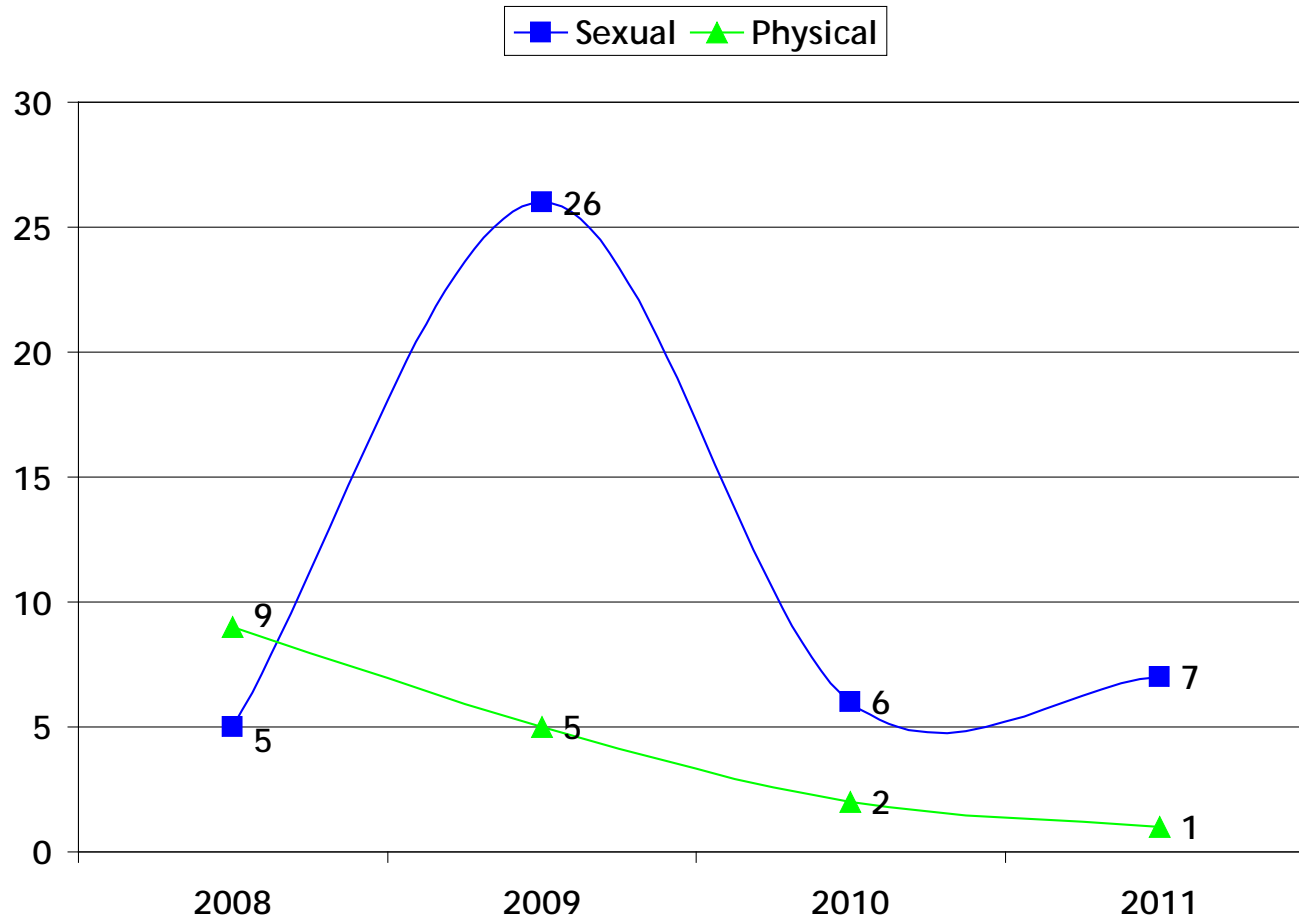
As a percentage



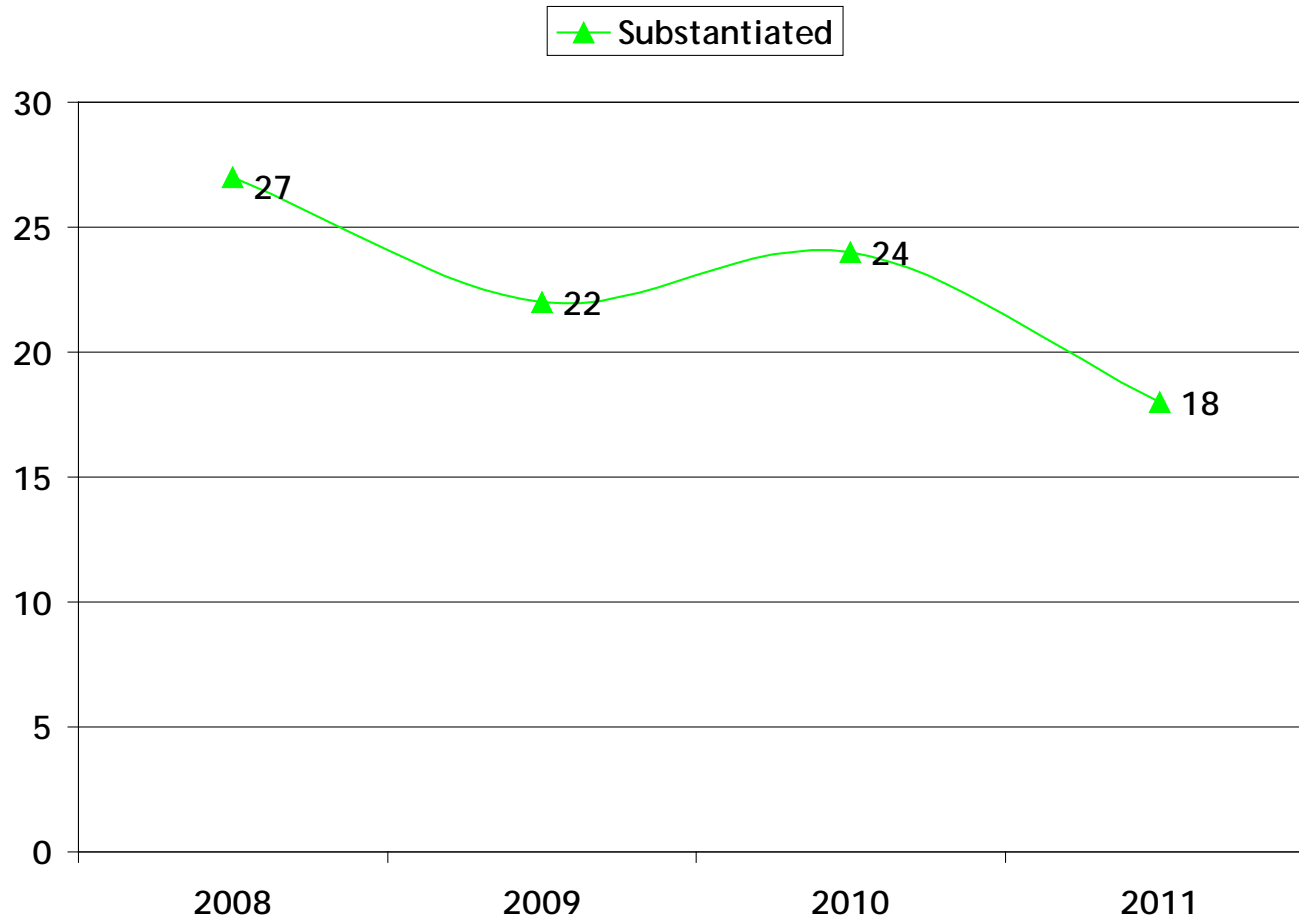
Child Abuse Cases



Specific Child Abuse Cases



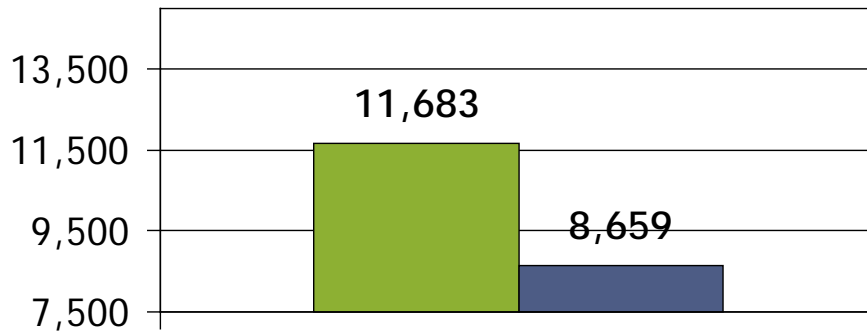
Child Neglect Cases



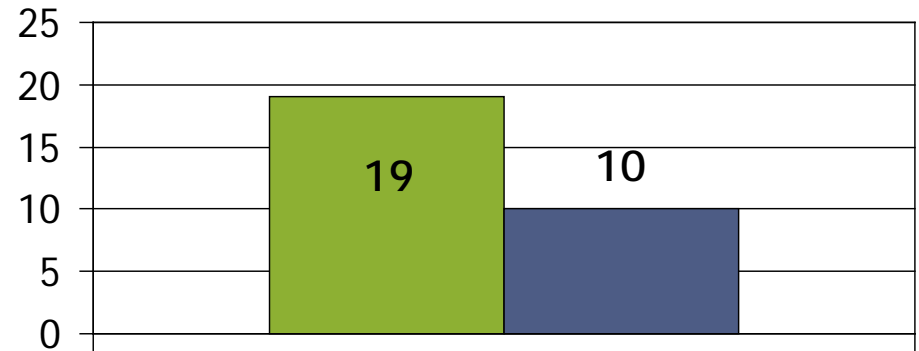
Teen Pregnancies

Teens ages 15 - 19 years old

Indiana

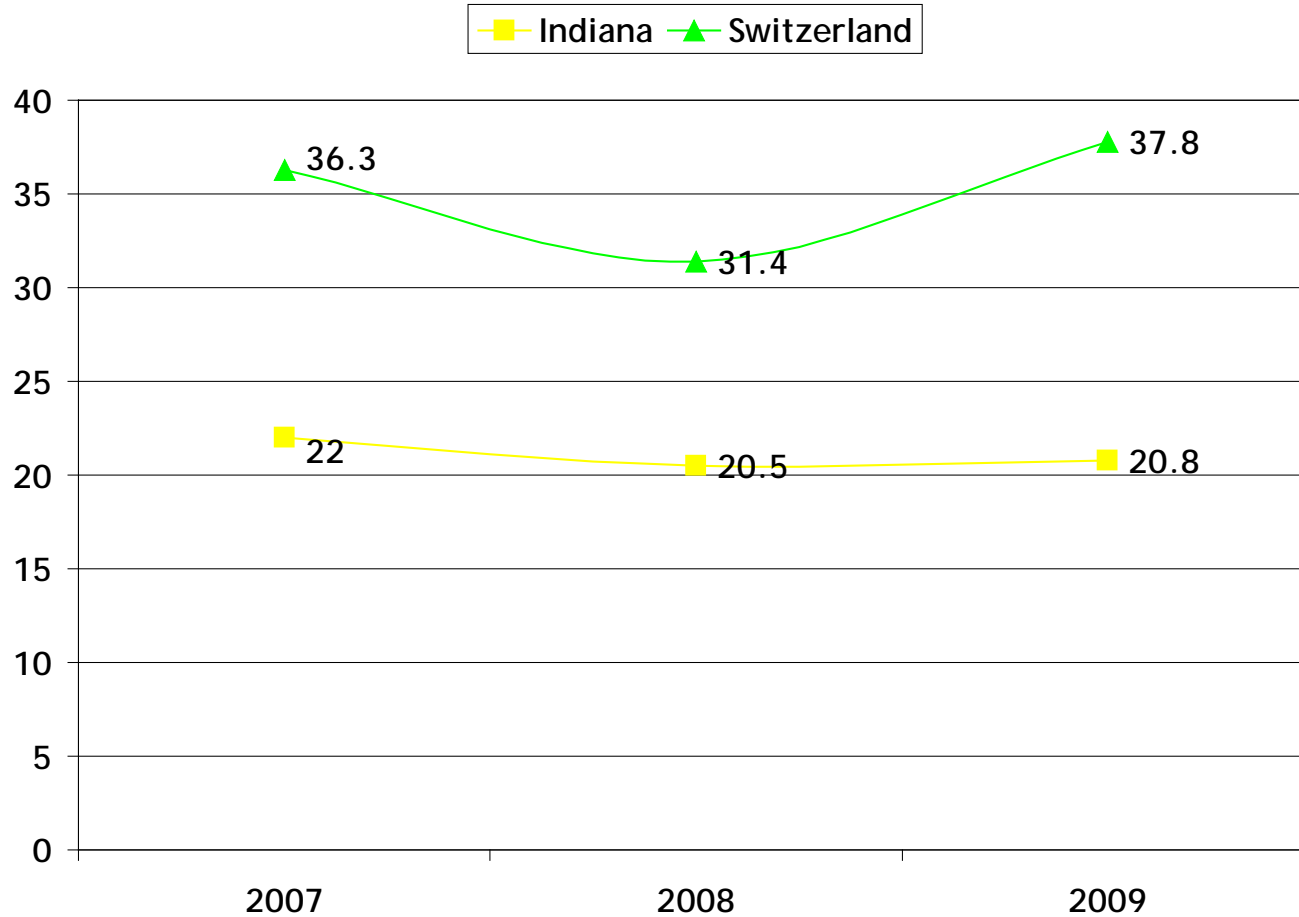


Switzerland



Teen Birth Rate

Per 1,000 Females Age 15-17



Infectious Disease

Hepatitis C

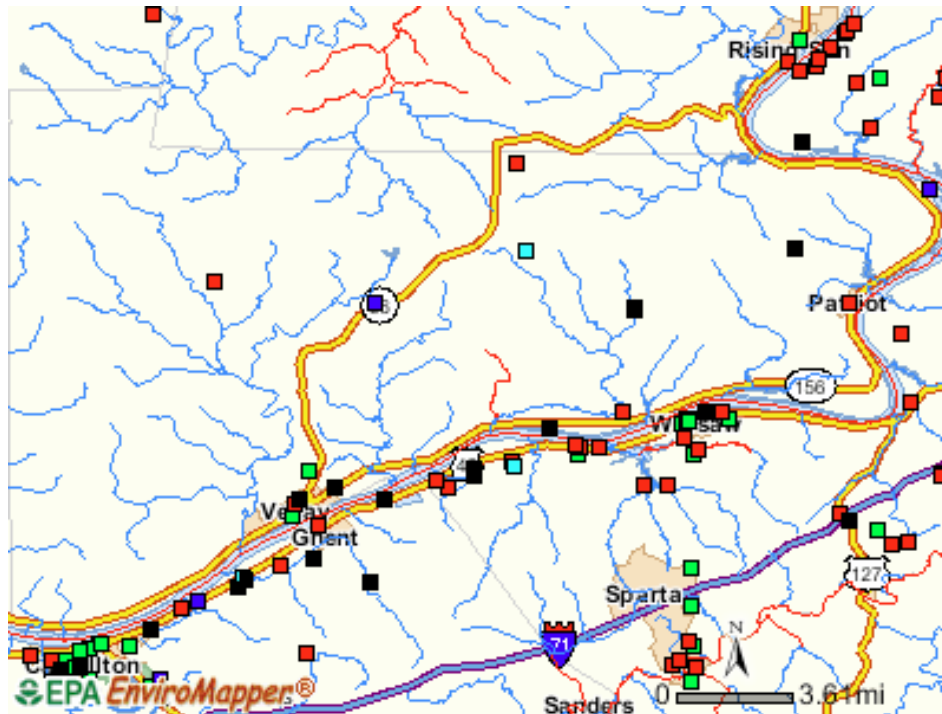
Hepatitis C	2010	2008
Indiana	5,954	7,066
Switzerland	6	<5

Sexually Transmitted Diseases

Newly diagnosed in the calendar year

Chlamydia	2011	2010	2009
Nation	1,412,791	1,307,893	1,244,180
Indiana	27,801	22,825	21,759
Switzerland	15	20	16

Environmental Facts



LEGEND

- Discharges to water
- Superfund sites
- Hazardous waste
- Toxic releases
- Air releases
- Others
- Multiple
- Streets
- Water Bodies
- Counties

Air

Facilities that product and release air pollutants: 3

Toxics

Facilities that have reported toxic releases: 3

Waste

Facilities that have reported hazardous waste activities: 3

Water

Facilities issued permits to discharge to waters: 8

Availability of Drugs

	Switzerland	Indiana
Alcohol Licenses	28	14,035
Alcohol Licenses per 1,000 persons age 18+	2.5	2.1
Tobacco Outlets	11	4,973
Tobacco Outlets per 1,000 persons	1.13	0.77
Tobacco Outlets per 1,000 Youth (Ages 10 - 17)	10.96	7.06
Meth Lab Seizures by Any Agency	3	1,395

Average Consumer Spending on Alcohol & Tobacco

Alcohol Spending	Nation	Indiana	Switzerland
Average Annual Alcohol Spending per Household	\$670	\$588	\$538
Above as Percentage of Median Household Income	1.6	1.4	1.4

Tobacco Spending	Nation	Indiana	Switzerland
Average Annual Tobacco Spending per Household	\$354	\$338	\$3330
Above as Percentage of Median Household Income	0.7	0.7	0.7

Adult Gambling Behavior

Percent of Adults Age 18+

Adult Gambling Behaviors			
	Switzerland	Indiana	Nation
Gambled at Casino in Last 12 Months	10.9	14.9	16.1
Gambled at Casino 6+ times in Last 12 Months	1	2	2.7
Gambled in Las Vegas or Atlantic City in the Last 12 Months	2.8	5.3	7.3
Bought Lottery Ticket in Last 12 Months	30.9	35.5	34.9
Played Lottery 6+ Times in Last 30 Days	10.2	12.3	11.5
Played Bingo in Last 12 Months	5	4.6	4.4

Problem Gambling

Individuals Enrolled in VEP (Indiana Gambling Voluntary Casino Self Exclusion Program) and Callers to the Indiana Problem Gambling Helpline

	VEP Members	Called Helpline
Indiana	3,608	843
Switzerland	17	<5
IN County Average	39.7	9.2

Alcohol Related Fatalities -2011

Number of Alcohol Related Fatalities	
Nation	37
Indiana	29
Switzerland	30

Problem Gambling

Individuals Enrolled in VEP (Indiana Gambling Voluntary Casino Self Eclusion Program) and Callers to the Indiana Problem Gambling Helpline

	VEP Members	Called Helpline
Indiana	3,608	843
Switzerland	17	>5
IN County Average	39.7	9.2

Methamphetamine Abuse

Labs Found to be Producing Methamphetamine

Average Number of
Labs Found in
Indiana Counties:

14.8

Total Number of Labs	
Indiana	1,363
Switzerland	1

Crime Report Data - 2009

Arrests directly from alcohol, drug possession and drug sale/manufacture

	Switzerland	Indiana
Driving Under the Influence	34	30,817
Liquor Law Violations	17	16,188
Drunkenness	12	20,938
Drug Possession	20	22,901
Opium/Cocaine	2	2,624
Marijuana	11	14,436
Synthetic Narcotics	3	1,830
Other Drug Possession	4	3,998
Drug Abuse-Sale/Manufacturing	6	6,451

Primary Care Physicians & Non-Physician Clinicians

Switzerland County

Rate of Primary Care
Physicians & Non Physician
Clinicians per 100,000
population:

10.3

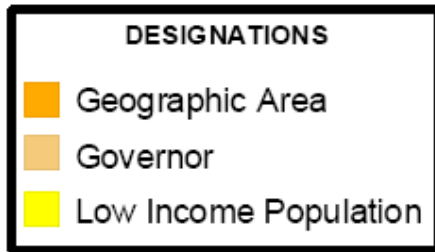
Type	Number
Family Medicine	0
General Internal Medicine	0
General Pediatric	0
Osteopathic	0
Primary Care Physician Assistants	0
Nurse Practitioners	1
TOTAL	1

Primary Care Health Professional Shortage Areas



Switzerland County has a shortage of health care professionals

Medically Underserved Areas



All areas in Switzerland County are considered medically underserved.

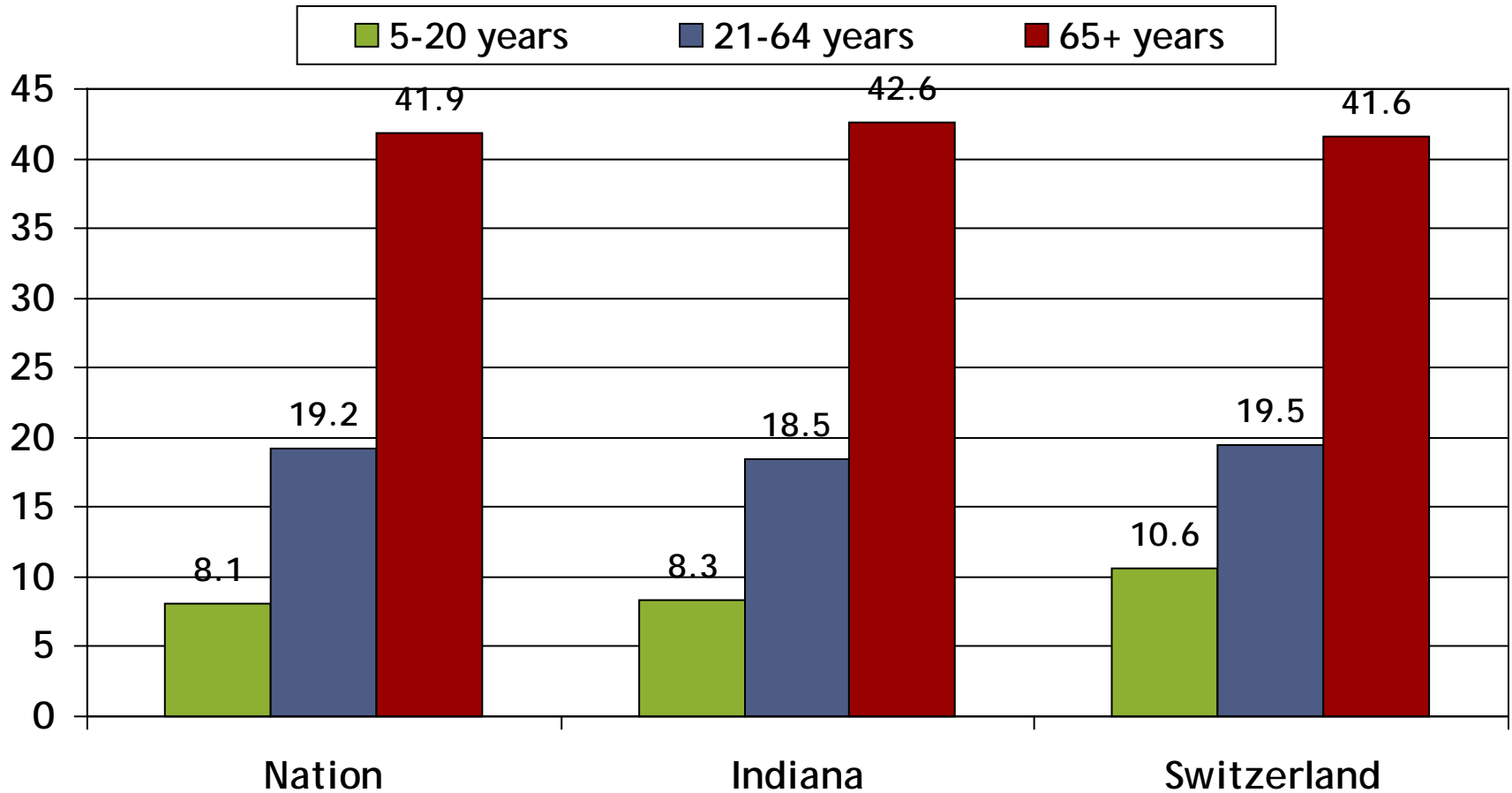
Mental Health Professional Shortage Areas



Switzerland County has a shortage of mental health professionals.

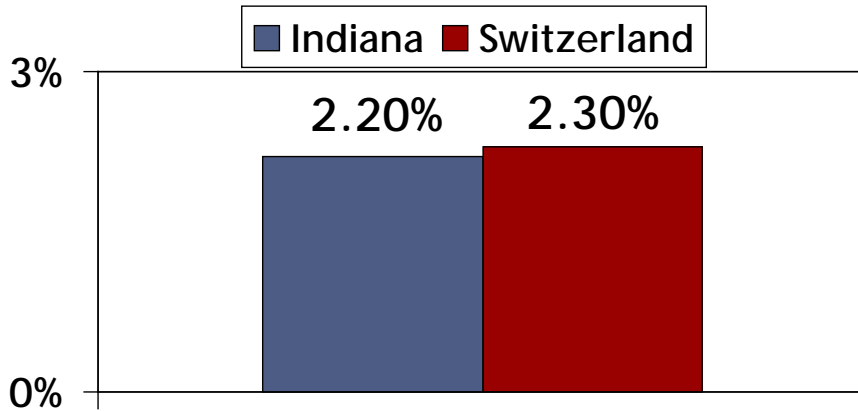
With Disability

Noninstitutionalized

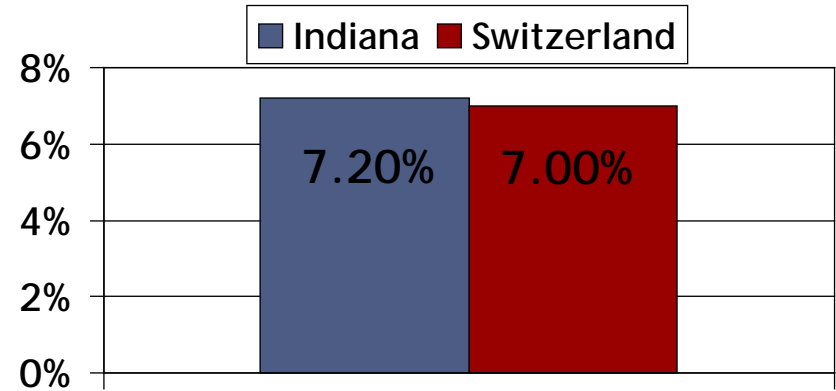


Asthma

Pediatric



Adult

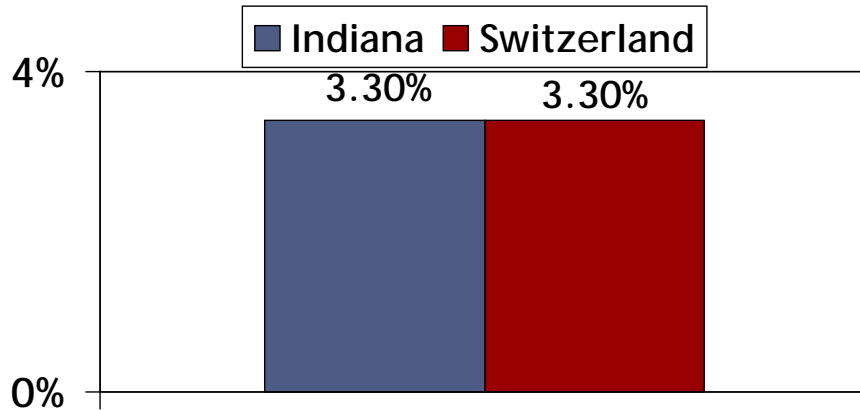


Cases	
Indiana	141,400
Switzerland	239

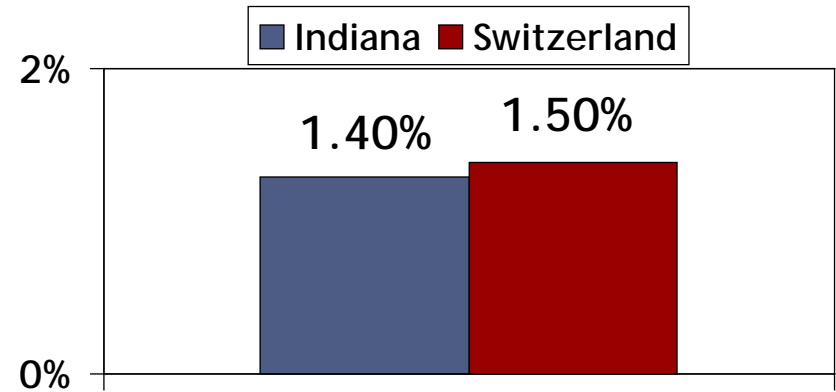
Cases	
Indiana	464,302
Switzerland	747

Lung Diseases

Chronic Bronchitis



Emphysema



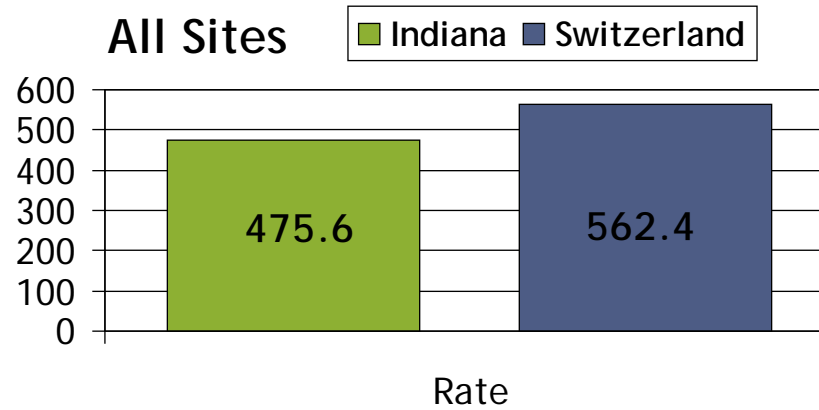
Cases	
Indiana	210,953
Switzerland	351

Cases	
Indiana	92,994
Switzerland	164

Incidences of Cancer: All Sites

Counts and Rates are for the years of 2004 - 2008

Rate is age adjusted 100,000 population to the 2000 U.S. population standard

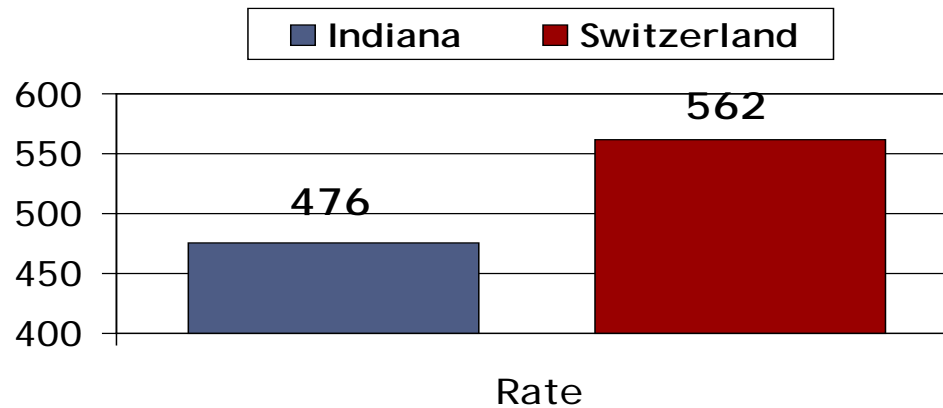


Average Annual Count	
Indiana	30,998
Switzerland	59

Incidences of Cancer: All Sites

Counts and Rates are for the years of 2004 - 2008

Rate is age adjusted 100,000 population to the 2000 U.S. Population Standard

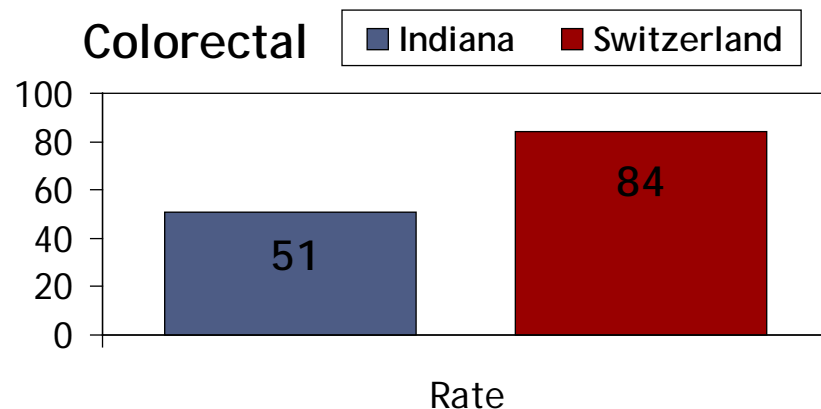
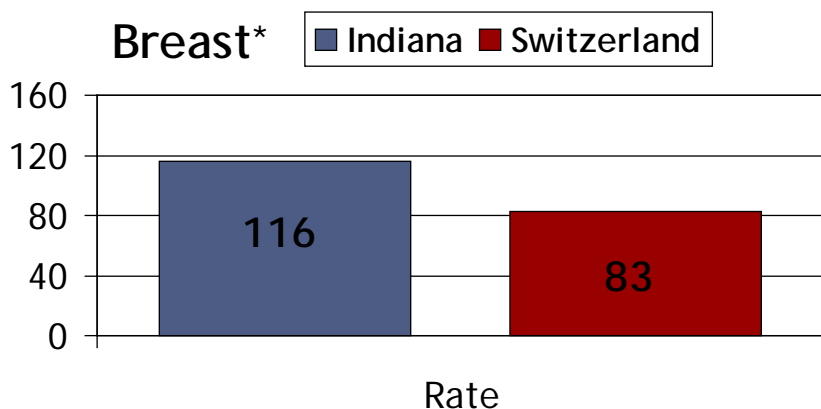


All Sites	Average Annual Count
Indiana	30,998
Switzerland	59

Incidences of Cancer: Breast & Colorectal

Counts and Rates are for the years of 2004 - 2008

Rate is age adjusted 100,000 population to the 2000 U.S. Population Standard



Breast	Average Annual Count
Indiana	4,102
Switzerland	17

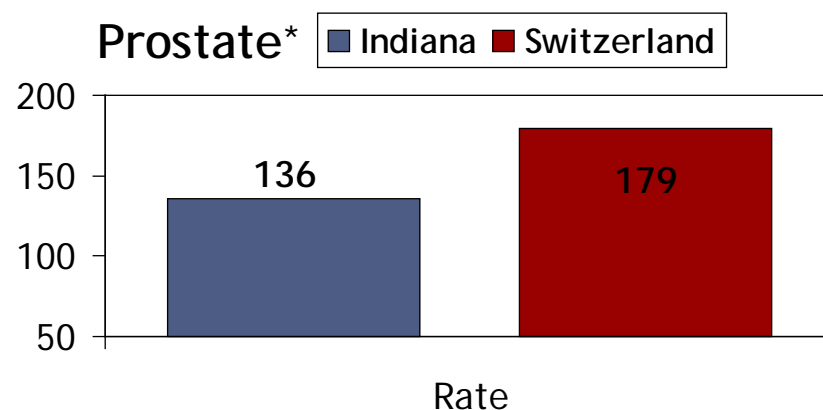
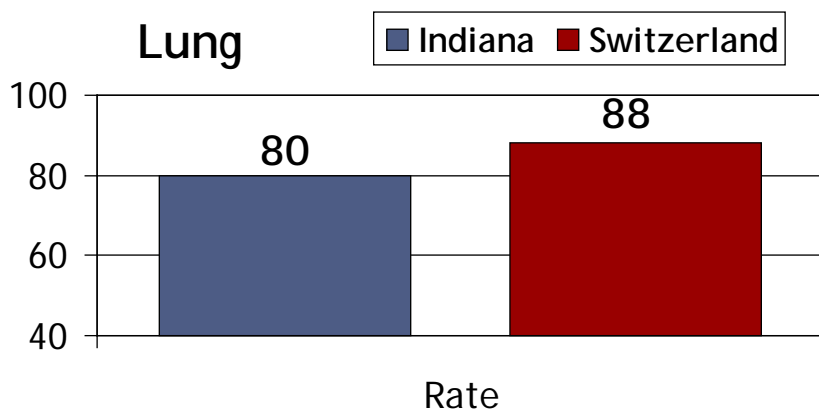
Colorectal	Average Annual Count
Indiana	3,351
Switzerland	8

•Only calculated for females

Incidences of Cancer: Lung & Prostate

Counts and Rates are for the years of 2004 - 2008

Rate is age adjusted 100,000 population to the 2000 U.S. Population Standard



Lung/Bronchus	Average Annual Count
Indiana	5,183
Switzerland	10

Prostate	Average Annual Count
Indiana	3,954
Switzerland	9

* Only calculated for males

Mental Health

	Adults with Serious Mental Illness	Seriously Emotionally Disturbed Children	Co-Occurring Disorders
All Counties	247,285	51,470	57,374
Switzerland	379	78	n/a

Causes of Death

Locale	Heart Disease	Diabetes	Cancer	Pneumonia / Flu
Indiana	13,509	1,646	13,093	1,191
Switzerland	28	2	28	2

Locale	Suicide	Homicide	Non-Motor Vehicle Accidents	Motor Vehicle Accidents
Indiana	826	336	1,871	701
Switzerland	1	0	3	1

Heart Related Deaths

Rate per 100,000 population

Major Cardio-Vascular Diseases	2010	2009	2008
Nation	193.6	195.2	202.9
Indiana	206.5	210.3	214.3
Switzerland	347.0	277.0	220.4

Ischemic Heart Disease	2010	2009	2008
Indiana	115.4	117.8	124.8
Switzerland	242.3	158.5	137.2

Respiratory Death Rates

Rate per 100,000 population

Chronic Lower Respiratory Disease (CLRD)	2009	2008
Nation	44.7	46.4
Indiana	58.3	60.8
Switzerland	31.3	18.6

Stroke Death Rate

Rate per 100,000 population

	2009	2008	2007
Nation	42.0	44.1	n/a
Indiana	46.8	48.8	49.1
Switzerland	31.3	57.4	29.9

Tobacco Usage

Estimated Smoking Prevalence - Adult Smokers as Percentage of Population

2005 - 2011	
Nation	19
Indiana	24
Switzerland	32

Obesity

Percent of adults that report a BMI \geq 30

	2009
Nation	25
Indiana	31
Switzerland	28

Physical Inactivity

Percent of Adults aged 20 and over reporting no Leisure Time Physical Activity

	2009
Nation	21
Indiana	27
Switzerland	28

Major Employers in Switzerland County

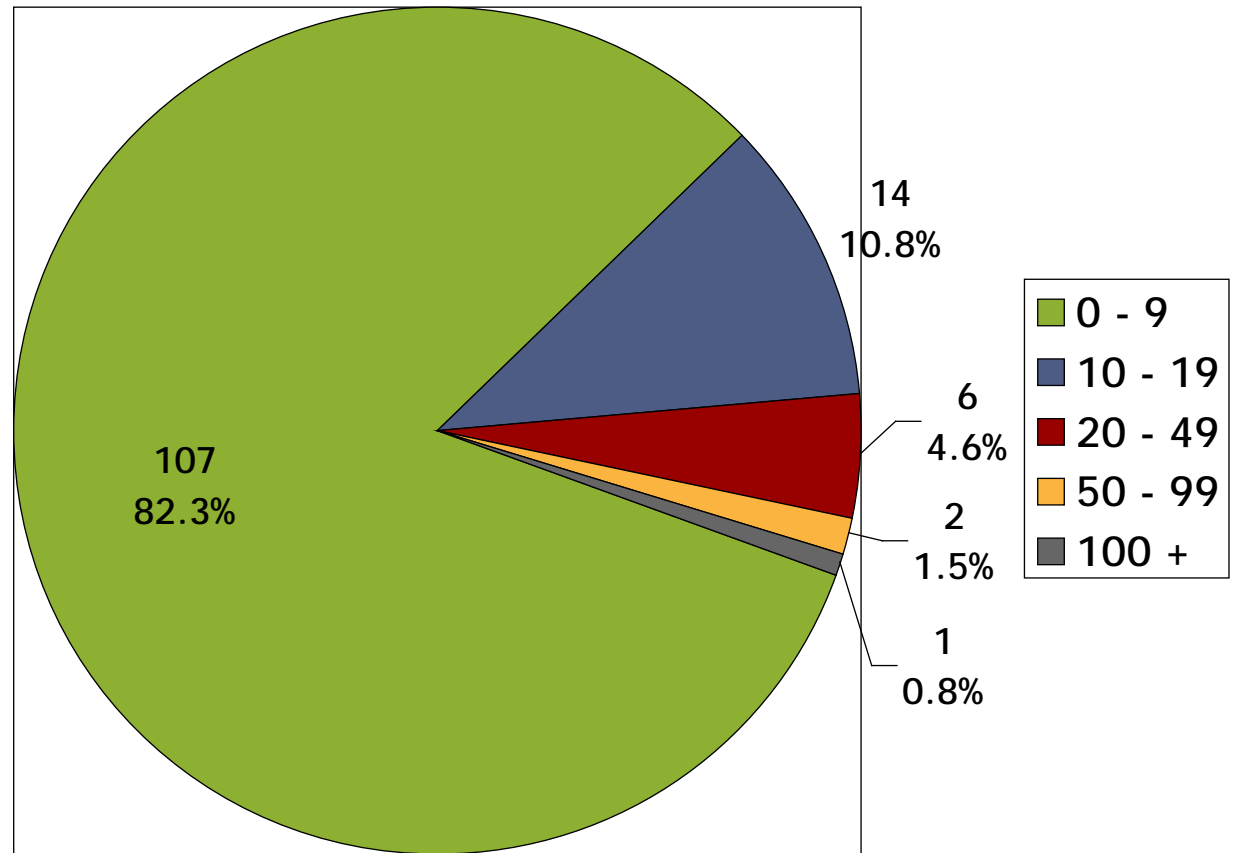
- **Belterra Casino Resort and Spa**
 - Total Employment: 1,196 associates
- **Manufacturing Companies**
 - Swiss Caps
 - Besi Industries
 - Hilltop Basic Resources
 - Spiral Fab
 - Process Systems and Services
 - Trenwa

Major Employers in Close Proximity

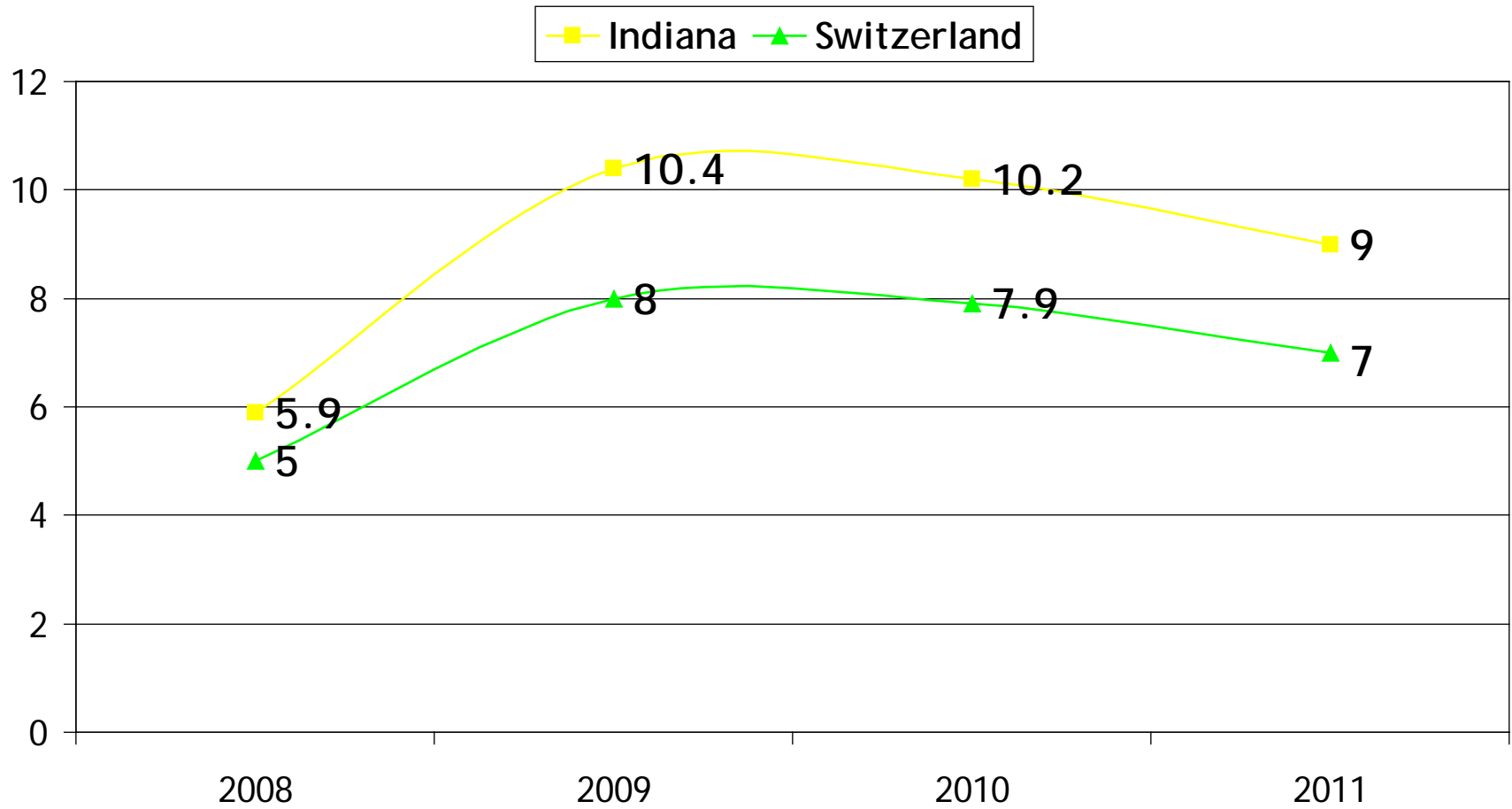
- Dow Corning (Carrollton, KY - Carroll Co.)
- North American Stainless (Carrollton, KY - Carroll Co.)
- Gallatin Steel (Carrollton, KY - Carroll Co.)
- Kentucky Utilities (Ghent, KY - Carroll Co.)

Firms and Employment by Size - 2010

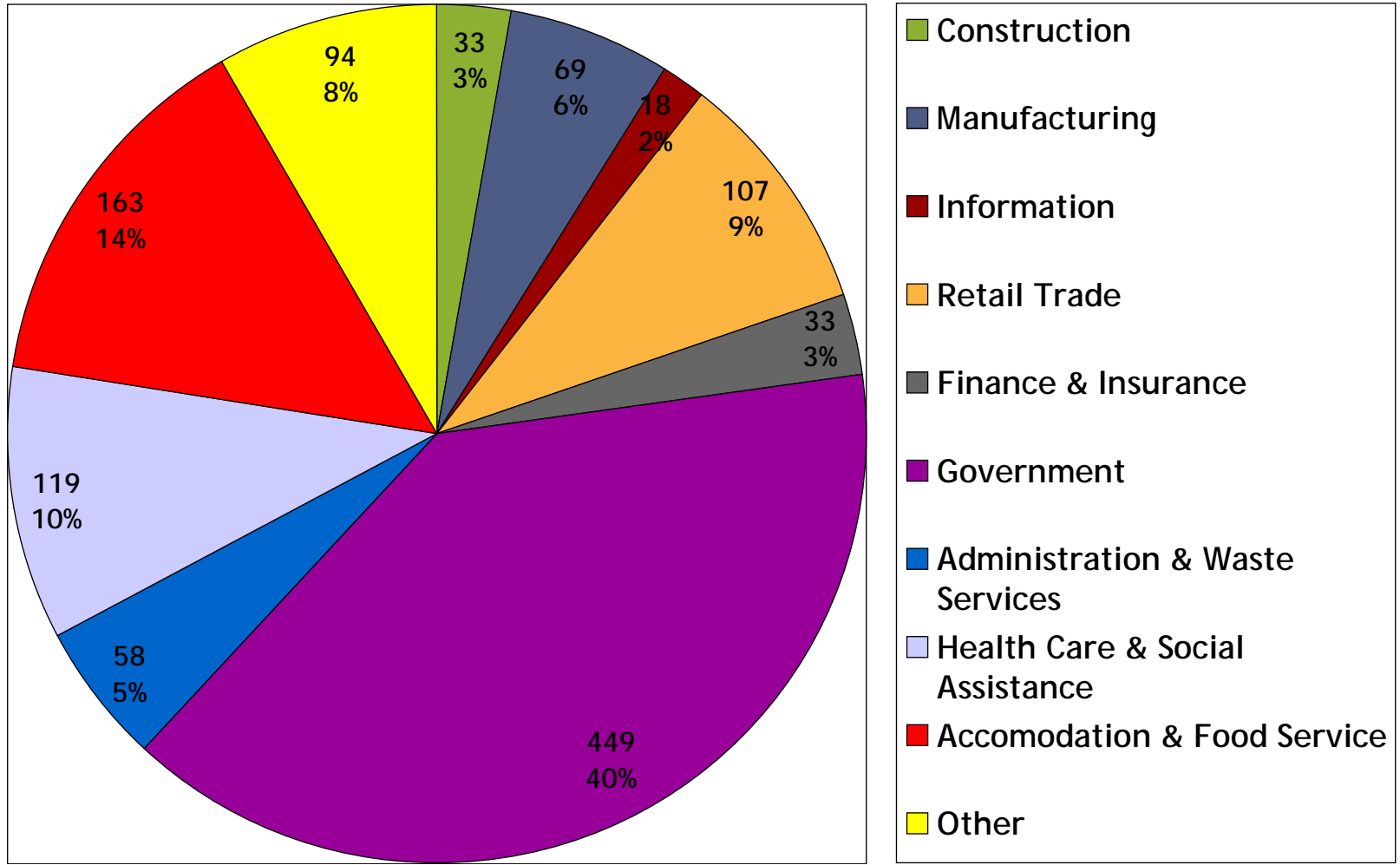
Total Business
Units: 130



Unemployment Rate



Employment by Sector, 2011



Land Use

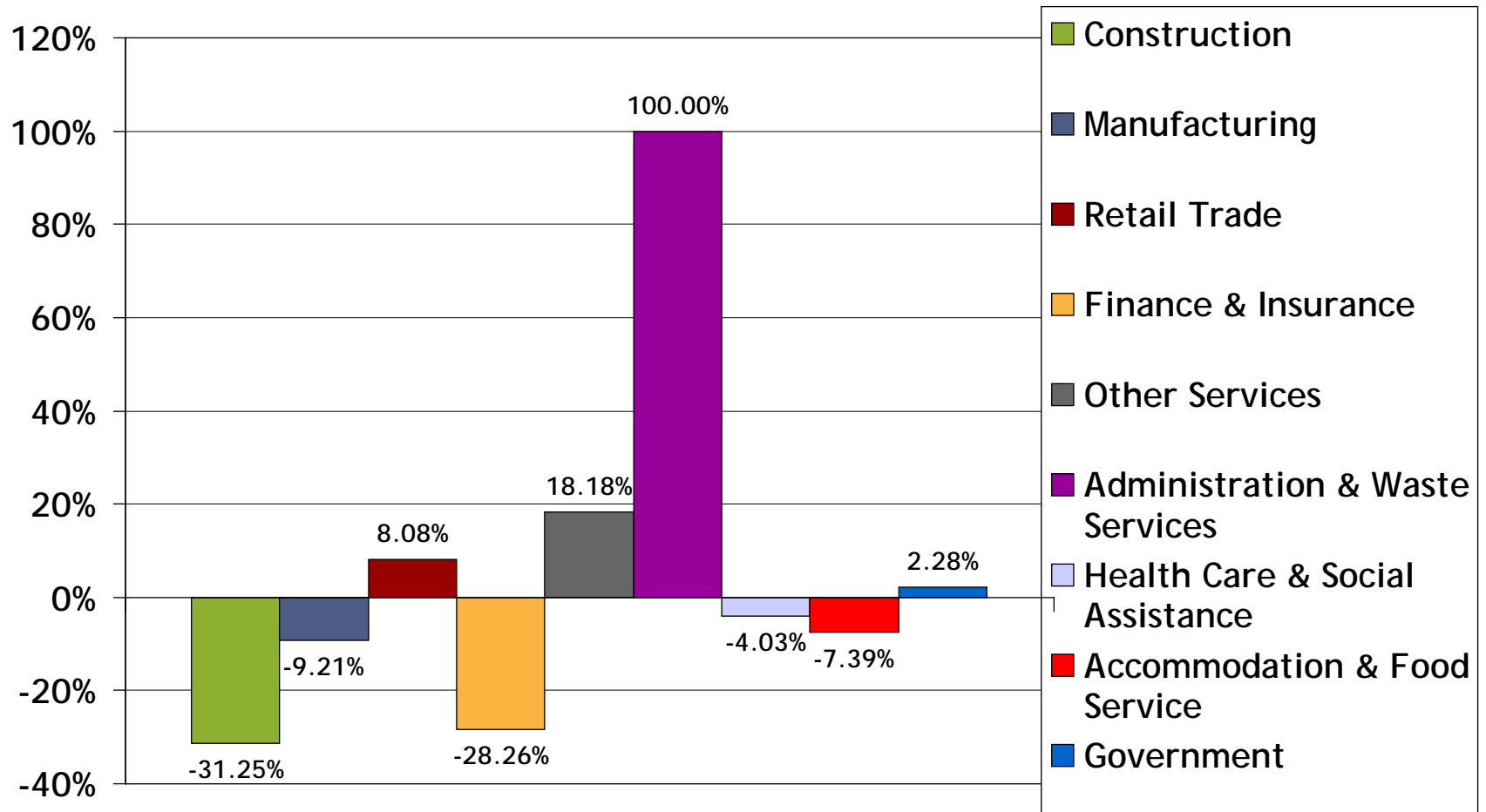
Crops: Tobacco

Rank in State for Acreage	2007 County Tobacco Crop Sales
2	\$834,000

	Harvested Acres	Production In (000) lbs
2004	842	1,898
2007	273	628

Employment by Sector

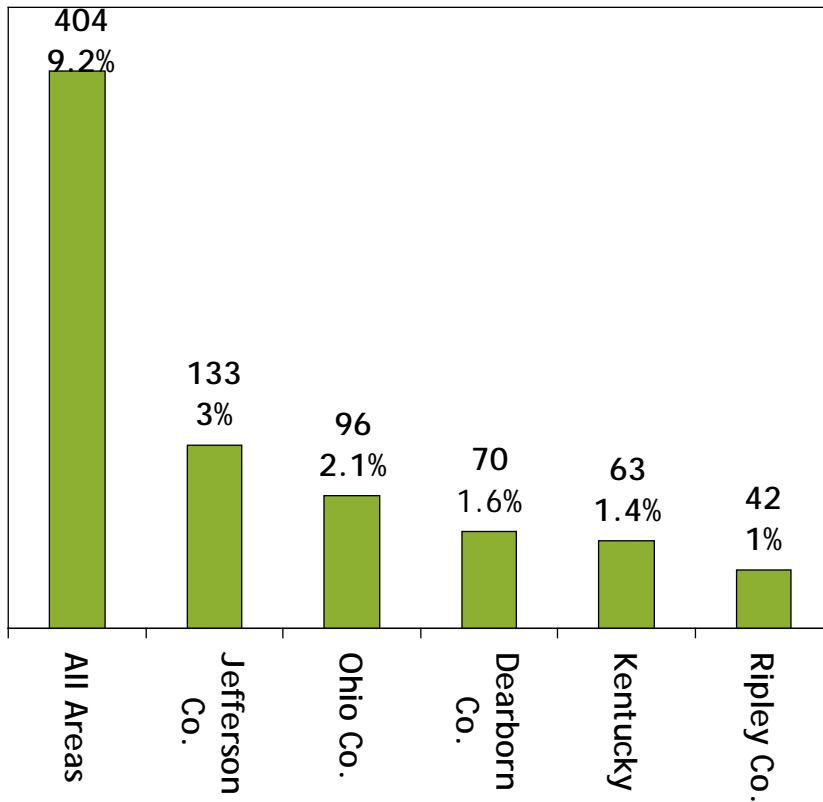
Percent Change 2007 - 2011



Commuting Patterns

Top Five in 2010

Into Switzerland FROM



Out of Switzerland TO

